

PIGA antibody - middle region
Rabbit Polyclonal Antibody
Catalog # AI12567

Specification

PIGA antibody - middle region - Product Information

Application	WB
Primary Accession	B3KUV7
Other Accession	NM_020473 , NP_065206
Reactivity	Human, Mouse, Rat, Rabbit, Pig, Bovine, Dog
Predicted	Human, Mouse, Rat, Rabbit, Pig, Bovine, Dog
Host	Rabbit
Clonality	Polyclonal
Calculated MW	19kDa KDa

PIGA antibody - middle region - Additional Information

Alias Symbol **GPI3, PIG-A**

Format

Liquid. Purified antibody supplied in 1x PBS buffer with 0.09% (w/v) sodium azide and 2% sucrose.

Reconstitution & Storage

Add 50 ul of distilled water. Final anti-PIGA antibody concentration is 1 mg/ml in PBS buffer with 2% sucrose. For longer periods of storage, store at 20°C. Avoid repeat freeze-thaw cycles.

Precautions

PIGA antibody - middle region is for research use only and not for use in diagnostic or therapeutic procedures.

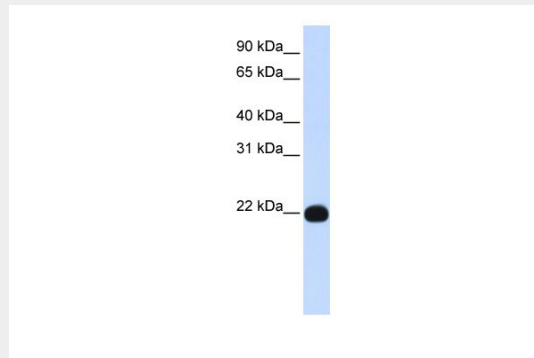
PIGA antibody - middle region - Protein Information

PIGA antibody - middle region - Protocols

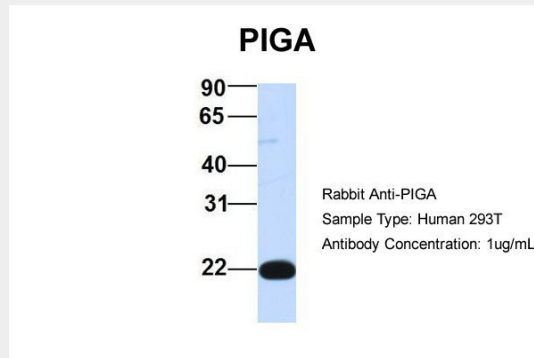
Provided below are standard protocols that you may find useful for product applications.

- [Western Blot](#)
- [Blocking Peptides](#)
- [Dot Blot](#)
- [Immunohistochemistry](#)
- [Immunofluorescence](#)
- [Immunoprecipitation](#)
- [Flow Cytometry](#)
- [Cell Culture](#)

PIGA antibody - middle region - Images



WB Suggested Anti-PIGA Antibody Titration: 0.2-1 $\mu\text{g/ml}$
ELISA Titer: 1:312500
Positive Control: Human Placenta



Host:Rabbit
Target Name:PIGA
Sample Tissue:Human 293T
Antibody Dilution: 1.0 $\mu\text{g/ml}$ PIGA is supported by BioGPS gene expression data to be expressed in HEK293T

PIGA antibody - middle region - References

Traulsen,A.,(2007)StemCells25(12),3081-3084ReconstitutionandStorage:Forshorttermuse,storeat2-8Cupto1week.Forlongtermstorage,storeat-20Cinsmallaliquotstopreventfreeze-thawcycles.