

FURIN antibody - N-terminal region
Rabbit Polyclonal Antibody
Catalog # AI12564**Specification**

FURIN antibody - N-terminal region - Product Information

Application	WB
Primary Accession	P09958
Other Accession	NM_002569 , NP_002560
Reactivity	Human, Mouse, Rat, Rabbit, Zebrafish, Sheep, Horse, Bovine, Guinea Pig, Dog
Predicted	Human, Mouse, Rat, Rabbit, Zebrafish, Chicken, Sheep, Horse, Bovine, Dog
Host	Rabbit
Clonality	Polyclonal
Calculated MW	74kDa kDa

FURIN antibody - N-terminal region - Additional Information**Gene ID** 5045**Alias Symbol** **FUR, PACE, PCSK3, SPC1****Other Names**

Furin, 3.4.21.75, Dibasic-processing enzyme, Paired basic amino acid residue-cleaving enzyme, PACE, FURIN, FUR, PACE, PCSK3

Format

Liquid. Purified antibody supplied in 1x PBS buffer with 0.09% (w/v) sodium azide and 2% sucrose.

Reconstitution & Storage

Add 50 ul of distilled water. Final anti-FURIN antibody concentration is 1 mg/ml in PBS buffer with 2% sucrose. For longer periods of storage, store at 20°C. Avoid repeat freeze-thaw cycles.

Precautions

FURIN antibody - N-terminal region is for research use only and not for use in diagnostic or therapeutic procedures.

FURIN antibody - N-terminal region - Protein Information**Name** FURIN {ECO:0000303|PubMed:7690548, ECO:0000312|HGNC:HGNC:8568}**Function**Ubiquitous endoprotease within constitutive secretory pathways capable of cleavage at the RX(K/R)R consensus motif (PubMed: [11799113](http://www.uniprot.org/citations/11799113), PubMed: [1629222](http://www.uniprot.org/citations/1629222), PubMed: [1713771](http://www.uniprot.org/citations/1713771), PubMed: [2251280](http://www.uniprot.org/citations/2251280), PubMed: [24666235](http://www.uniprot.org/citations/24666235))

target="_blank">24666235, PubMed:25974265, PubMed:7592877, PubMed:7690548, PubMed:9130696). Mediates processing of TGF β 1, an essential step in TGF-beta-1 activation (PubMed:7737999). Converts through proteolytic cleavage the non-functional Brain natriuretic factor prohormone into its active hormone BNP(1-32) (PubMed:20489134, PubMed:21763278). By mediating processing of accessory subunit ATP6AP1/Ac45 of the V-ATPase, regulates the acidification of dense-core secretory granules in islets of Langerhans cells (By similarity).

Cellular Location

Golgi apparatus, trans-Golgi network membrane; Single-pass type I membrane protein. Cell membrane; Single-pass type I membrane protein. Secreted. Endosome membrane; Single-pass type I membrane protein. Note=Shuttles between the trans-Golgi network and the cell surface (PubMed:11799113, PubMed:9412467). Propeptide cleavage is a prerequisite for exit of furin molecules out of the endoplasmic reticulum (ER). A second cleavage within the propeptide occurs in the trans Golgi network (TGN), followed by the release of the propeptide and the activation of furin (PubMed:11799113)

Tissue Location

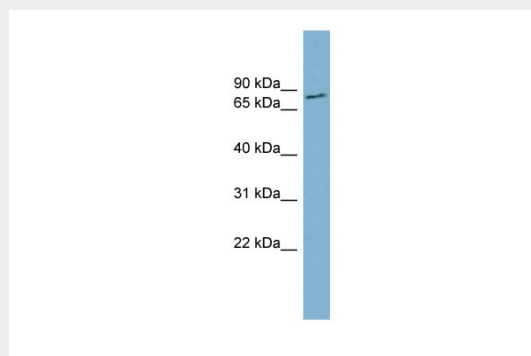
Seems to be expressed ubiquitously.

FURIN antibody - N-terminal region - Protocols

Provided below are standard protocols that you may find useful for product applications.

- [Western Blot](#)
- [Blocking Peptides](#)
- [Dot Blot](#)
- [Immunohistochemistry](#)
- [Immunofluorescence](#)
- [Immunoprecipitation](#)
- [Flow Cytometry](#)
- [Cell Culture](#)

FURIN antibody - N-terminal region - Images



WB Suggested Anti-FURIN Antibody Titration: 0.2-1 μ g/ml
ELISA Titer: 1:62500

Positive Control: THP-1 cell lysate