

LBR antibody - middle region
Rabbit Polyclonal Antibody
Catalog # AI12559**Specification**

LBR antibody - middle region - Product Information

Application	WB
Primary Accession	O14739
Other Accession	NM_002296 , NP_002287
Reactivity	Human, Mouse, Rat, Rabbit, Zebrafish, Pig, Horse, Yeast, Bovine, Guinea Pig, Dog
Predicted	Human, Mouse, Rat, Zebrafish, Horse, Bovine, Guinea Pig, Dog
Host	Rabbit
Clonality	Polyclonal
Calculated MW	71kDa kDa

LBR antibody - middle region - Additional Information**Gene ID** 3930**Alias Symbol** **DHCR14B, LMN2R, MGC9041, PHA****Other Names**

Lamin-B receptor, Integral nuclear envelope inner membrane protein, LMN2R, LBR

Format

Liquid. Purified antibody supplied in 1x PBS buffer with 0.09% (w/v) sodium azide and 2% sucrose.

Reconstitution & Storage

Add 50 ul of distilled water. Final anti-LBR antibody concentration is 1 mg/ml in PBS buffer with 2% sucrose. For longer periods of storage, store at 20°C. Avoid repeat freeze-thaw cycles.

Precautions

LBR antibody - middle region is for research use only and not for use in diagnostic or therapeutic procedures.

LBR antibody - middle region - Protein Information**Name** LBR**Function**Catalyzes the reduction of the C14-unsaturated bond of lanosterol, as part of the metabolic pathway leading to cholesterol biosynthesis (PubMed: [12618959](http://www.uniprot.org/citations/12618959), PubMed: [16784888](http://www.uniprot.org/citations/16784888), PubMed: [21327084](http://www.uniprot.org/citations/21327084), PubMed: [27336722](http://www.uniprot.org/citations/27336722), PubMed: [9630650](http://www.uniprot.org/citations/9630650)). Plays a critical

role in myeloid cell cholesterol biosynthesis which is essential to both myeloid cell growth and functional maturation (By similarity). Mediates the activation of NADPH oxidases, perhaps by maintaining critical levels of cholesterol required for membrane lipid raft formation during neutrophil differentiation (By similarity). Anchors the lamina and the heterochromatin to the inner nuclear membrane (PubMed:10828963).

Cellular Location

Nucleus inner membrane; Multi-pass membrane protein. Endoplasmic reticulum membrane. Cytoplasm Nucleus. Note=Nucleus; nuclear rim

Tissue Location

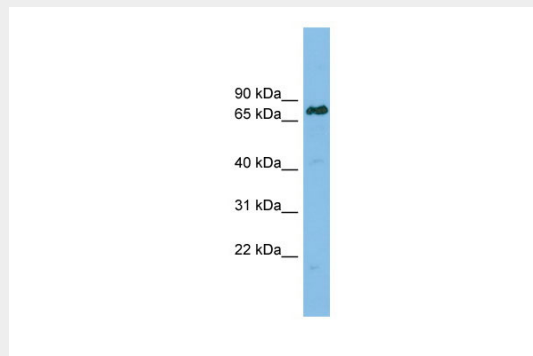
Expressed in the bone marrow, liver, heart, adrenal gland, lung, placenta and uterus (PubMed:16784888). Expressed in osteoclasts and osteoblast-like cells (PubMed:21327084)

LBR antibody - middle region - Protocols

Provided below are standard protocols that you may find useful for product applications.

- [Western Blot](#)
- [Blocking Peptides](#)
- [Dot Blot](#)
- [Immunohistochemistry](#)
- [Immunofluorescence](#)
- [Immunoprecipitation](#)
- [Flow Cytometry](#)
- [Cell Culture](#)

LBR antibody - middle region - Images



WB Suggested Anti-LBR Antibody Titration: 0.2-1 µg/ml

ELISA Titer: 1:1562500

Positive Control: RPMI 8226 cell lysate

LBR is supported by BioGPS gene expression data to be expressed in RPMI 8226