

FCER1A antibody - N-terminal region
Rabbit Polyclonal Antibody
Catalog # AI12553**Specification**

FCER1A antibody - N-terminal region - Product Information

Application	WB
Primary Accession	P12319
Other Accession	NM_002001 , NP_001992
Reactivity	Human
Predicted	Human
Host	Rabbit
Clonality	Polyclonal
Calculated MW	27kDa KDa

FCER1A antibody - N-terminal region - Additional Information**Gene ID** 2205**Alias Symbol** **FCE1A, FcERI****Other Names**

High affinity immunoglobulin epsilon receptor subunit alpha, Fc-epsilon RI-alpha, FcERI, IgE Fc receptor subunit alpha, FCER1A, FCE1A

Format

Liquid. Purified antibody supplied in 1x PBS buffer with 0.09% (w/v) sodium azide and 2% sucrose.

Reconstitution & Storage

Add 50 ul of distilled water. Final anti-FCER1A antibody concentration is 1 mg/ml in PBS buffer with 2% sucrose. For longer periods of storage, store at 20°C. Avoid repeat freeze-thaw cycles.

Precautions

FCER1A antibody - N-terminal region is for research use only and not for use in diagnostic or therapeutic procedures.

FCER1A antibody - N-terminal region - Protein Information**Name** FCER1A**Synonyms** FCE1A**Function**

High-affinity receptor for immunoglobulin epsilon/IgE. Mediates IgE effector functions in myeloid cells. Upon IgE binding and antigen/allergen cross-linking initiates signaling pathways that lead to myeloid cell activation and differentiation. On mast cells, basophils and eosinophils stimulates the secretion of vasoactive amines, lipid mediators and cytokines that contribute to inflammatory response, tissue remodeling and cytotoxicity against microbes. Triggers the immediate hypersensitivity response to allergens as a host defense mechanism against helminth parasites,

pathogenic bacteria and venom toxicity. When dysregulated, it can elicit harmful life-threatening allergic and anaphylactic reactions.

Cellular Location

Cell membrane; Single-pass type I membrane protein

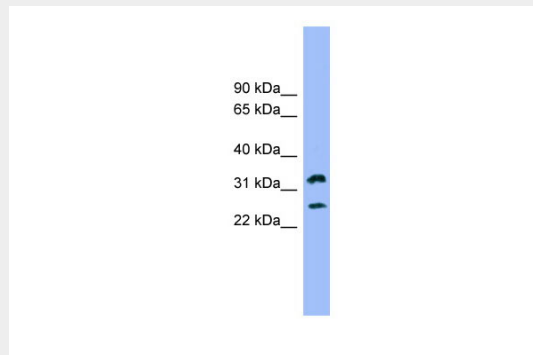
Tissue Location

Expressed in eosinophils.

FCER1A antibody - N-terminal region - Protocols

Provided below are standard protocols that you may find useful for product applications.

- [Western Blot](#)
- [Blocking Peptides](#)
- [Dot Blot](#)
- [Immunohistochemistry](#)
- [Immunofluorescence](#)
- [Immunoprecipitation](#)
- [Flow Cytometry](#)
- [Cell Culture](#)

FCER1A antibody - N-terminal region - Images

WB Suggested Anti-FCER1A Antibody Titration: 0.2-1 $\mu\text{g/ml}$

ELISA Titer: 1:62500

Positive Control: 721_B cell lysate