

GALC antibody - middle region
Rabbit Polyclonal Antibody
Catalog # AI12506

Specification

GALC antibody - middle region - Product Information

Application	WB
Primary Accession	P54803
Other Accession	NM_000153 , NP_000144
Reactivity	Human, Mouse, Rat, Rabbit, Pig, Horse, Bovine, Guinea Pig, Dog
Predicted Host	Human, Mouse, Rat, Bovine, Dog
Clonality	Rabbit
Calculated MW	Polyclonal 73kDa KDa

GALC antibody - middle region - Additional Information

Gene ID 2581

Other Names

Galactocerebrosidase, GALCERase, 3.2.1.46, Galactocerebroside beta-galactosidase, Galactosylceramidase, Galactosylceramide beta-galactosidase, GALC

Format

Liquid. Purified antibody supplied in 1x PBS buffer with 0.09% (w/v) sodium azide and 2% sucrose.

Reconstitution & Storage

Add 50 ul of distilled water. Final anti-GALC antibody concentration is 1 mg/ml in PBS buffer with 2% sucrose. For longer periods of storage, store at 20°C. Avoid repeat freeze-thaw cycles.

Precautions

GALC antibody - middle region is for research use only and not for use in diagnostic or therapeutic procedures.

GALC antibody - middle region - Protein Information

Name GALC ([HGNC:4115](#))

Function

Hydrolyzes the galactose ester bonds of glycolipids such as galactosylceramide and galactosylsphingosine (PubMed: [8281145](http://www.uniprot.org/citations/8281145), PubMed: [8399327](http://www.uniprot.org/citations/8399327)). Enzyme with very low activity responsible for the lysosomal catabolism of galactosylceramide, a major lipid in myelin, kidney and epithelial cells of small intestine and colon (PubMed: [8281145](http://www.uniprot.org/citations/8281145), PubMed: [8399327](http://www.uniprot.org/citations/8399327)).

Cellular Location

Lysosome.

Tissue Location

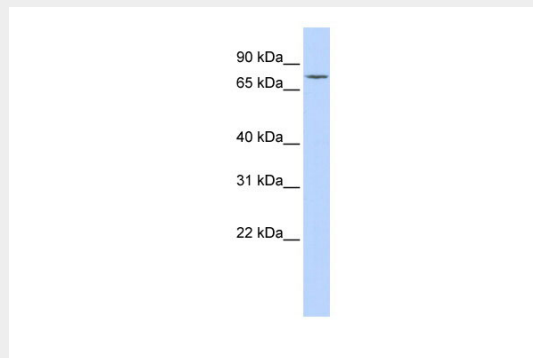
Detected in urine. Detected in testis, brain and placenta (at protein level). Detected in kidney and liver

GALC antibody - middle region - Protocols

Provided below are standard protocols that you may find useful for product applications.

- [Western Blot](#)
- [Blocking Peptides](#)
- [Dot Blot](#)
- [Immunohistochemistry](#)
- [Immunofluorescence](#)
- [Immunoprecipitation](#)
- [Flow Cytometry](#)
- [Cell Culture](#)

GALC antibody - middle region - Images



WB Suggested Anti-GALC Antibody Titration: 0.2-1 μ g/ml

ELISA Titer: 1:62500

Positive Control: Jurkat cell lysate

GALC antibody - middle region - References

Formichi, P., (2007) J. Cell. Physiol. 212(3), 737-743 Reconstitution and Storage: For short term use, store at 2-8°C up to 1 week. For long term storage, store at -20°C in small aliquots to prevent freeze-thaw cycles.