

SPINT1 antibody - middle region
Rabbit Polyclonal Antibody
Catalog # AI12498**Specification**

SPINT1 antibody - middle region - Product Information

Application	WB
Primary Accession	B2RBU9
Other Accession	NM_001032367 , NP_001027539
Reactivity	Human, Mouse, Rat, Rabbit, Pig, Horse, Bovine, Guinea Pig, Dog
Predicted	Human, Mouse, Rat, Rabbit, Pig, Horse, Bovine, Guinea Pig, Dog
Host	Rabbit
Clonality	Polyclonal
Calculated MW	53kDa KDa

SPINT1 antibody - middle region - Additional Information

Alias Symbol **HAI, HAI1, MANSC2**

Format

Liquid. Purified antibody supplied in 1x PBS buffer with 0.09% (w/v) sodium azide and 2% sucrose.

Reconstitution & Storage

Add 50 ul of distilled water. Final anti-SPINT1 antibody concentration is 1 mg/ml in PBS buffer with 2% sucrose. For longer periods of storage, store at 20°C. Avoid repeat freeze-thaw cycles.

Precautions

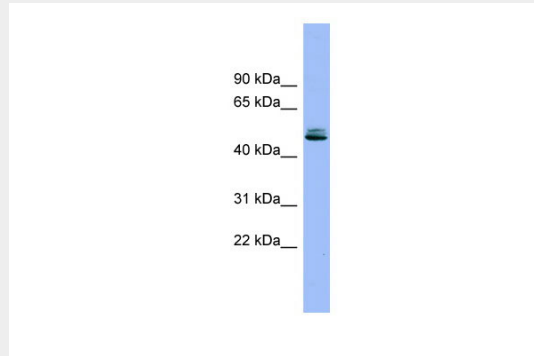
SPINT1 antibody - middle region is for research use only and not for use in diagnostic or therapeutic procedures.

SPINT1 antibody - middle region - Protein Information**SPINT1 antibody - middle region - Protocols**

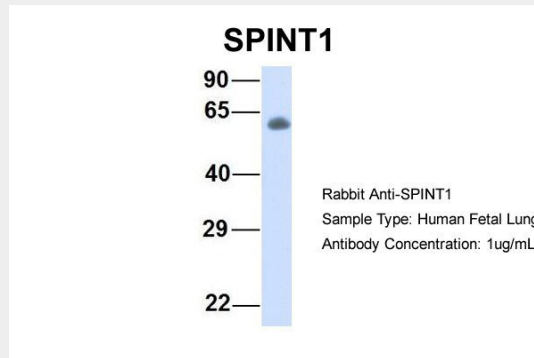
Provided below are standard protocols that you may find useful for product applications.

- [Western Blot](#)
- [Blocking Peptides](#)
- [Dot Blot](#)
- [Immunohistochemistry](#)
- [Immunofluorescence](#)
- [Immunoprecipitation](#)
- [Flow Cytometry](#)
- [Cell Culture](#)

SPINT1 antibody - middle region - Images



WB Suggested Anti-SPINT1 Antibody Titration: 0.2-1 μ g/ml
Positive Control: PANC1 cell lysate



Host:Rabbit
Target Name:SPINT1
Sample Tissue:Human Fetal Lung
Antibody Dilution: 1.0 μ g/ml