

TM9SF1 antibody - middle region
Rabbit Polyclonal Antibody
Catalog # AI12477

Specification

TM9SF1 antibody - middle region - Product Information

Application	IHC, WB
Primary Accession	O15321
Other Accession	NM_006405 , NP_006396
Reactivity	Human, Mouse, Rat, Rabbit, Pig, Horse, Bovine, Guinea Pig, Dog
Predicted Host	Human, Mouse, Rat, Rabbit, Horse, Dog
Clonality	Rabbit
Calculated MW	Polyclonal 67kDa KDa

TM9SF1 antibody - middle region - Additional Information

Gene ID 10548

Alias Symbol HMP70, MP70

Other Names

Transmembrane 9 superfamily member 1, MP70 protein family member, hMP70, TM9SF1

Format

Liquid. Purified antibody supplied in 1x PBS buffer with 0.09% (w/v) sodium azide and 2% sucrose.

Reconstitution & Storage

Add 100 ul of distilled water. Final anti-TM9SF1 antibody concentration is 1 mg/ml in PBS buffer with 2% sucrose. For longer periods of storage, store at 20°C. Avoid repeat freeze-thaw cycles.

Precautions

TM9SF1 antibody - middle region is for research use only and not for use in diagnostic or therapeutic procedures.

TM9SF1 antibody - middle region - Protein Information

Name TM9SF1

Function

Plays an essential role in autophagy.

Cellular Location

Lysosome membrane; Multi-pass membrane protein. Cytoplasmic vesicle, autophagosome membrane; Multi- pass membrane protein

Tissue Location

Expressed in lung, pancreas, kidney, liver, placenta, skeletal muscle, heart and brain. The amount

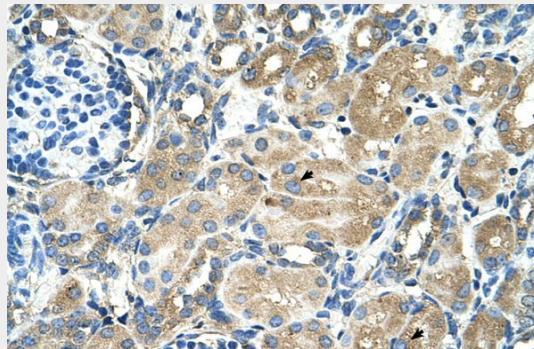
in skeletal muscle, heart and brain were considerably lower than in the other tissues.

TM9SF1 antibody - middle region - Protocols

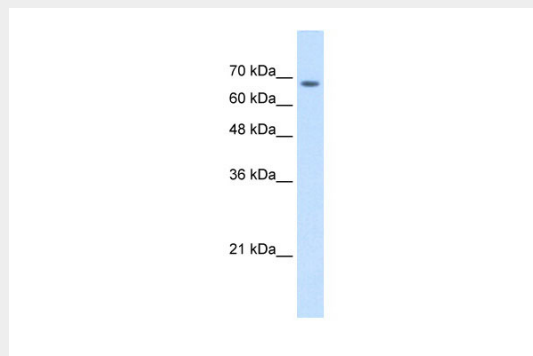
Provided below are standard protocols that you may find useful for product applications.

- [Western Blot](#)
- [Blocking Peptides](#)
- [Dot Blot](#)
- [Immunohistochemistry](#)
- [Immunofluorescence](#)
- [Immunoprecipitation](#)
- [Flow Cytometry](#)
- [Cell Culture](#)

TM9SF1 antibody - middle region - Images



Human kidney



WB Suggested Anti-TM9SF1 Antibody Titration: 2.5 μ g/ml
Positive Control: Jurkat cell lysate

TM9SF1 antibody - middle region - References

Sugasawa, T., (2001) Gene 273(2), 227-237 Reconstitution and Storage: For short term use, store at 2-8°C up to 1 week. For long term storage, store at -20°C in small aliquots to prevent freeze-thaw cycles.