

AGPAT2 antibody - C-terminal region
Rabbit Polyclonal Antibody
Catalog # AI12463**Specification**

AGPAT2 antibody - C-terminal region - Product Information

Application	IHC, WB
Primary Accession	O15120
Other Accession	NM_006412 , NP_006403
Reactivity	Human, Horse, Yeast, Bovine, Dog
Predicted	Human, Bovine, Dog
Host	Rabbit
Clonality	Polyclonal
Calculated MW	31kDa KDa

AGPAT2 antibody - C-terminal region - Additional Information**Gene ID** 10555**Alias Symbol** 1-AGPAT2, BSCL, BSCL1, LPAAB, LPAAT-beta**Other Names**

1-acyl-sn-glycerol-3-phosphate acyltransferase beta, 2.3.1.51, 1-acylglycerol-3-phosphate O-acyltransferase 2, 1-AGP acyltransferase 2, 1-AGPAT 2, Lysophosphatidic acid acyltransferase beta, LPAAT-beta, AGPAT2

Format

Liquid. Purified antibody supplied in 1x PBS buffer with 0.09% (w/v) sodium azide and 2% sucrose.

Reconstitution & Storage

Add 50 ul of distilled water. Final anti-AGPAT2 antibody concentration is 1 mg/ml in PBS buffer with 2% sucrose. For longer periods of storage, store at 20°C. Avoid repeat freeze-thaw cycles.

Precautions

AGPAT2 antibody - C-terminal region is for research use only and not for use in diagnostic or therapeutic procedures.

AGPAT2 antibody - C-terminal region - Protein Information**Name** AGPAT2**Function**

Converts 1-acyl-sn-glycerol-3-phosphate (lysophosphatidic acid or LPA) into 1,2-diacyl-sn-glycerol-3-phosphate (phosphatidic acid or PA) by incorporating an acyl moiety at the sn-2 position of the glycerol backbone.

Cellular Location

Endoplasmic reticulum membrane; Multi-pass membrane protein

Tissue Location

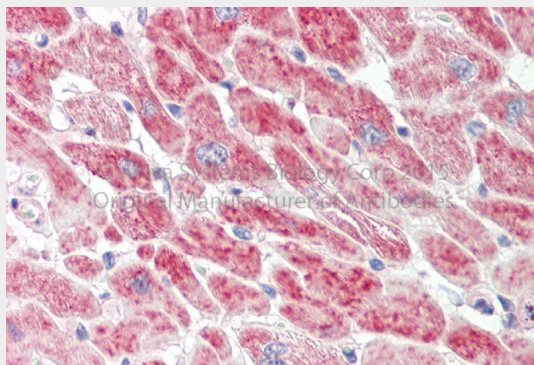
Expressed predominantly in adipose tissue, pancreas and liver.

AGPAT2 antibody - C-terminal region - Protocols

Provided below are standard protocols that you may find useful for product applications.

- [Western Blot](#)
- [Blocking Peptides](#)
- [Dot Blot](#)
- [Immunohistochemistry](#)
- [Immunofluorescence](#)
- [Immunoprecipitation](#)
- [Flow Cytometry](#)
- [Cell Culture](#)

AGPAT2 antibody - C-terminal region - Images



Rabbit Anti-AGPAT2 antibody

Formalin Fixed Paraffin Embedded Tissue: Human Adult Heart Observed Staining: Cytoplasm in hepatocytes

Primary Antibody

Concentration: 1:600

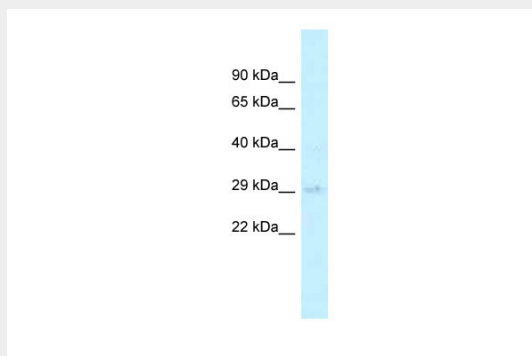
Secondary Antibody: Donkey anti-Rabbit-Cy3

Secondary Antibody

Concentration: 1:200

Magnification: 20X

Exposure Time: 0.5 – 2.0 sec



WB Suggested Anti-AGPAT2 Antibody Titration: 1.0 µg/ml

Positive Control: 721_B Whole Cell