

GNPMB antibody - N-terminal region
Rabbit Polyclonal Antibody
Catalog # AI12434

Specification

GNPMB antibody - N-terminal region - Product Information

Application	IHC, WB
Primary Accession	Q14956
Other Accession	NM_002510 , NP_002501
Reactivity	Human, Mouse, Rat, Rabbit, Pig, Horse, Bovine, Guinea Pig, Dog
Predicted	Human, Mouse, Rat, Rabbit, Pig, Horse, Bovine, Guinea Pig, Dog
Host	Rabbit
Clonality	Polyclonal
Calculated MW	60kDa KDa

GNPMB antibody - N-terminal region - Additional Information

Gene ID 10457

Alias Symbol HGFIN, NMB
Other Names
Transmembrane glycoprotein NMB, Transmembrane glycoprotein HGFIN, GPNMB, HGFIN, NMB

Target/Specificity
100% homologous to both isoforms of hGNPMB

Format
Liquid. Purified antibody supplied in 1x PBS buffer with 0.09% (w/v) sodium azide and 2% sucrose.

Reconstitution & Storage
Add 50 ul of distilled water. Final anti-GPNMB antibody concentration is 1 mg/ml in PBS buffer with 2% sucrose. For longer periods of storage, store at 20°C. Avoid repeat freeze-thaw cycles.

Precautions
GNPMB antibody - N-terminal region is for research use only and not for use in diagnostic or therapeutic procedures.

GNPMB antibody - N-terminal region - Protein Information

Name GPNMB

Synonyms HGFIN {ECO:0000303|PubMed:12609765}, NMB

Function
Could be a melanogenic enzyme.

Cellular Location

Cell membrane; Single-pass type I membrane protein Melanosome membrane; Single-pass type I membrane protein. Early endosome membrane; Single-pass type I membrane protein.

Note=Identified by mass spectrometry in melanosome fractions from stage I to stage IV

Tissue Location

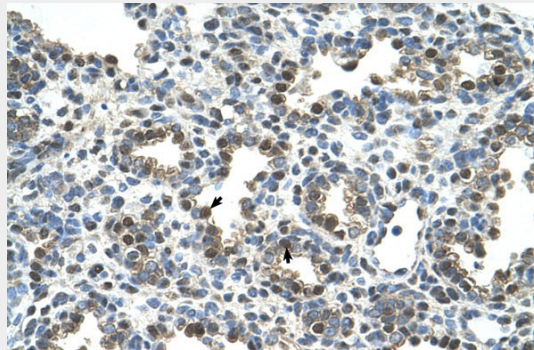
Widely expressed, but very low expression, if any, in the brain (PubMed:12609765, PubMed:16609006). Expressed in the epidermis with higher levels in melanocytes compared with keratinocytes and Langerhans cells (at protein level) (PubMed:29336782). Expressed in peripheral blood, but not bone marrow mononuclear cells (PubMed:12609765). Expressed in tissue macrophages, including liver Kuppfer cells and lung alveolar macrophages, in podocytes and in some cells of the ciliary body of the eye (at protein level) (PubMed:16489096). May be overexpressed in various cancers, including melanoma and glioblastoma multiforme (PubMed:16489096, PubMed:16609006, PubMed:7814155).

GNMB antibody - N-terminal region - Protocols

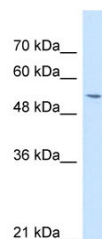
Provided below are standard protocols that you may find useful for product applications.

- [Western Blot](#)
- [Blocking Peptides](#)
- [Dot Blot](#)
- [Immunohistochemistry](#)
- [Immunofluorescence](#)
- [Immunoprecipitation](#)
- [Flow Cytometry](#)
- [Cell Culture](#)

GNMB antibody - N-terminal region - Images



Human Lung



WB Suggested Anti-GPNMB Antibody Titration: 1 µg/ml
Positive Control: HepG2 cell lysate

GPNMB antibody - N-terminal region - References

Oh, J.H., (2005) Mamm. Genome 16(12), 942-954 Reconstitution and Storage: For short term use, store at 2-8°C up to 1 week. For long term storage, store at -20°C in small aliquots to prevent freeze-thaw cycles.

GPNMB antibody - N-terminal region - Citations

- [Expression pattern and prognostic impact of glycoprotein non-metastatic B \(GPNMB\) in triple-negative breast cancer](#)