

**SLCO5A1 antibody - middle region**  
**Rabbit Polyclonal Antibody**  
**Catalog # AI12370****Specification**

---

**SLCO5A1 antibody - middle region - Product Information**

Application	WB
Primary Accession	<a href="#">O9H2Y9</a>
Other Accession	<a href="#">NM_030958</a> , <a href="#">NP_112220</a>
Reactivity	Human, Mouse, Rat, Rabbit, Zebrafish, Pig, Horse, Bovine, Dog
Predicted	Human, Mouse, Rat, Chicken, Horse, Bovine, Dog
Host	Rabbit
Clonality	Polyclonal
Calculated MW	92kDa KDa

**SLCO5A1 antibody - middle region - Additional Information****Gene ID** 81796**Alias Symbol** [FLJ39560](#), [OATP-J](#), [OATP5A1](#), [OATPRP4](#), [SLC21A15](#), [OATP-RP4](#)**Other Names**

Solute carrier organic anion transporter family member 5A1, Organic anion transporter polypeptide-related protein 4, OATP-RP4, OATPRP4, Solute carrier family 21 member 15, SLCO5A1, OATP5A1, SLC21A15

**Format**

Liquid. Purified antibody supplied in 1x PBS buffer with 0.09% (w/v) sodium azide and 2% sucrose.

**Reconstitution & Storage**

Add 50 ul of distilled water. Final anti-SLCO5A1 antibody concentration is 1 mg/ml in PBS buffer with 2% sucrose. For longer periods of storage, store at 20°C. Avoid repeat freeze-thaw cycles.

**Precautions**

SLCO5A1 antibody - middle region is for research use only and not for use in diagnostic or therapeutic procedures.

**SLCO5A1 antibody - middle region - Protein Information****Name** SLCO5A1**Synonyms** OATP5A1, SLC21A15**Cellular Location**

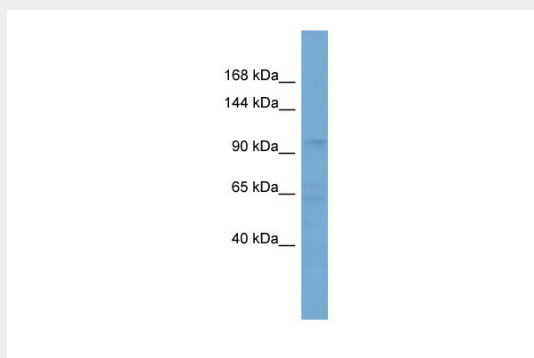
Cell membrane; Multi-pass membrane protein.

## SLCO5A1 antibody - middle region - Protocols

Provided below are standard protocols that you may find useful for product applications.

- [Western Blot](#)
- [Blocking Peptides](#)
- [Dot Blot](#)
- [Immunohistochemistry](#)
- [Immunofluorescence](#)
- [Immunoprecipitation](#)
- [Flow Cytometry](#)
- [Cell Culture](#)

## SLCO5A1 antibody - middle region - Images



WB Suggested Anti-SLCO5A1 Antibody Titration: 0.2-1  $\mu\text{g/ml}$

ELISA Titer: 1:312500

Positive Control: HepG2 cell lysate