

SLC2A8 antibody - middle region
Rabbit Polyclonal Antibody
Catalog # AI12355**Specification**

SLC2A8 antibody - middle region - Product Information

| | |
|-------------------|---|
| Application | WB |
| Primary Accession | O9NY64 |
| Other Accession | NM_014580 , NP_055395 |
| Reactivity | Human, Rabbit |
| Predicted | Human, Rabbit |
| Host | Rabbit |
| Clonality | Polyclonal |
| Calculated MW | 51kDa KDa |

SLC2A8 antibody - middle region - Additional Information**Gene ID** 29988**Alias Symbol** **GLUT8, GLUTX1****Other Names**

Solute carrier family 2, facilitated glucose transporter member 8, Glucose transporter type 8, GLUT-8, Glucose transporter type X1, SLC2A8, GLUT8, GLUTX1

Format

Liquid. Purified antibody supplied in 1x PBS buffer with 0.09% (w/v) sodium azide and 2% sucrose.

Reconstitution & Storage

Add 50 ul of distilled water. Final anti-SLC2A8 antibody concentration is 1 mg/ml in PBS buffer with 2% sucrose. For longer periods of storage, store at 20°C. Avoid repeat freeze-thaw cycles.

Precautions

SLC2A8 antibody - middle region is for research use only and not for use in diagnostic or therapeutic procedures.

SLC2A8 antibody - middle region - Protein Information**Name** SLC2A8 ([HGNC:13812](#))**Function**

Insulin-regulated facilitative hexose transporter that mediates the transport of glucose and fructose (By similarity). Facilitates hepatic influx of dietary trehalose, which in turn inhibits glucose and fructose influx triggering a starvation signal and hepatic autophagy through activation of AMPK and ULK1 (PubMed:27922102). Also able to mediate the transport of dehydroascorbate.

Cellular Location

Cell membrane {ECO:0000250|UniProtKB:Q9JJZ1}; Multi-pass membrane protein. Cytoplasmic

vesicle membrane {ECO:0000250|UniProtKB:Q9JJZ1}; Multi-pass membrane protein.
Note=Principally intracellular. May move between intracellular vesicles and the plasma membrane. The dileucine internalization motif is critical for intracellular sequestration {ECO:0000250|UniProtKB:Q9JJZ1}

Tissue Location

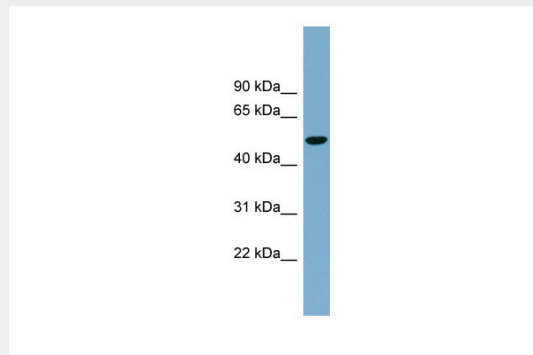
Highly expressed in testis, but not in testicular carcinoma. Lower amounts present in most other tissues

SLC2A8 antibody - middle region - Protocols

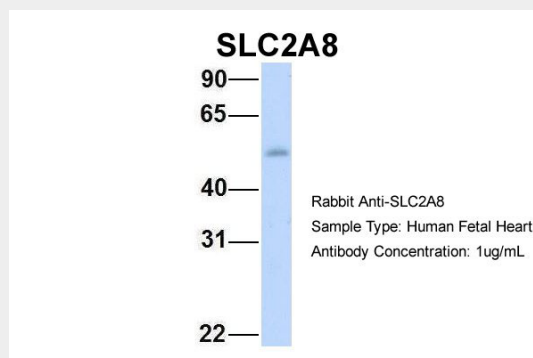
Provided below are standard protocols that you may find useful for product applications.

- [Western Blot](#)
- [Blocking Peptides](#)
- [Dot Blot](#)
- [Immunohistochemistry](#)
- [Immunofluorescence](#)
- [Immunoprecipitation](#)
- [Flow Cytometry](#)
- [Cell Culture](#)

SLC2A8 antibody - middle region - Images

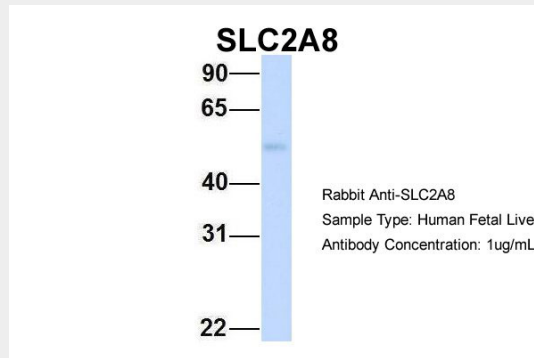


WB Suggested Anti-SLC2A8 Antibody Titration: 0.2-1 µg/ml
Positive Control: NCI-H226 cell lysate



Host:Rabbit
Target Name:SLC2A8
Sample Tissue:Human Fetal Heart

Antibody Dilution: 1.0µg/ml



Host:Rabbit
Target Name:SLC2A8
Sample Tissue:Human Fetal Liver
Antibody Dilution: 1.0µg/ml