

SLC6A5 Antibody - N-terminal region
Rabbit Polyclonal Antibody
Catalog # AI12338**Specification**

SLC6A5 Antibody - N-terminal region - Product Information

Application	IHC, WB
Primary Accession	Q4VAM4
Reactivity	Human, Mouse, Rat, Rabbit, Zebrafish, Pig, Horse, Bovine, Guinea Pig, Dog
Predicted	Human, Mouse, Rat, Rabbit, Zebrafish, Pig, Horse, Bovine, Guinea Pig, Dog
Host	Rabbit
Clonality	Polyclonal
Calculated MW	43kDa KDa

SLC6A5 Antibody - N-terminal region - Additional Information**Format**

Liquid. Purified antibody supplied in 1x PBS buffer with 0.09% (w/v) sodium azide and 2% sucrose.

Reconstitution & Storage

Add 50 μ l of distilled water. Final Anti- antibody concentration is 1 mg/ml in PBS buffer with 2% sucrose. For longer periods of storage, store at -20°C. Avoid repeat freeze-thaw cycles.

Precautions

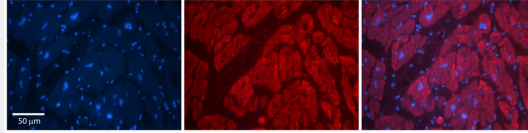
SLC6A5 Antibody - N-terminal region is for research use only and not for use in diagnostic or therapeutic procedures.

SLC6A5 Antibody - N-terminal region - Protein Information**SLC6A5 Antibody - N-terminal region - Protocols**

Provided below are standard protocols that you may find useful for product applications.

- [Western Blot](#)
- [Blocking Peptides](#)
- [Dot Blot](#)
- [Immunohistochemistry](#)
- [Immunofluorescence](#)
- [Immunoprecipitation](#)
- [Flow Cytometry](#)
- [Cell Culture](#)

SLC6A5 Antibody - N-terminal region - Images

Rabbit Anti-SLC6A5 Antibody

Formalin Fixed Paraffin Embedded Tissue: Human Adult heart Observed Staining: Cytoplasmic

Primary Antibody

Concentration: 1:600

Secondary Antibody: Donkey anti-Rabbit-Cy2/3

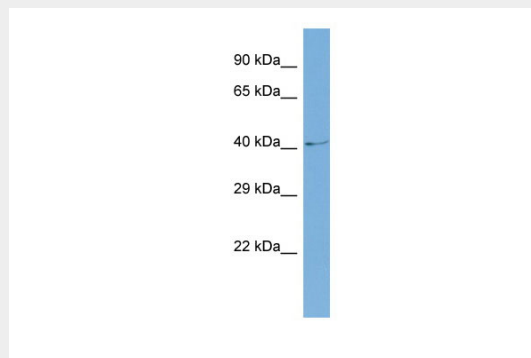
Secondary Antibody

Concentration: 1:200

Magnification: 20X

Exposure Time: 0.5 – 2.0 sec

Protocol located in Reviews and Data.



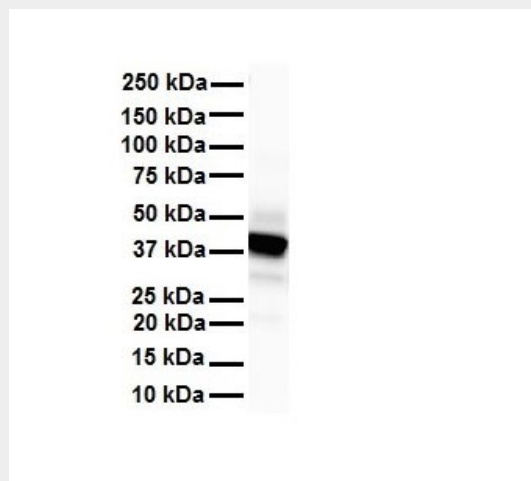
Host: Rabbit

Target Name: SLC6A5

Sample Tissue: COLO205 Whole cell lysate

s

Antibody Dilution: 1.0 µg/ml



WB Suggested Anti-SLC6A5 antibody Titration: 1 µg/ml

Sample Type: Human heart