

SLC29A2 antibody - C-terminal region
Rabbit Polyclonal Antibody
Catalog # AI12327**Specification**

SLC29A2 antibody - C-terminal region - Product Information

Application	WB
Primary Accession	Q14542
Other Accession	NM_001532 , NP_001523
Reactivity	Human, Rat, Rabbit, Pig, Horse, Bovine, Guinea Pig, Dog
Predicted Host	Rabbit, Pig, Horse, Bovine, Dog
Clonality	Rabbit
Calculated MW	Polyclonal 50kDa KDa

SLC29A2 antibody - C-terminal region - Additional Information**Gene ID** 3177**Alias Symbol** DER12, ENT2, HNP36**Other Names**

Equilibrative nucleoside transporter 2, 36 kDa nucleolar protein HNP36, Delayed-early response protein 12, Equilibrative nitrobenzylmercaptapurine riboside-insensitive nucleoside transporter, Equilibrative NBMPR-insensitive nucleoside transporter, Hydrophobic nucleolar protein, 36 kDa, Nucleoside transporter, ei-type, Solute carrier family 29 member 2, SLC29A2, DER12, ENT2, HNP36

Format

Liquid. Purified antibody supplied in 1x PBS buffer with 0.09% (w/v) sodium azide and 2% sucrose.

Reconstitution & Storage

Add 50 ul of distilled water. Final anti-SLC29A2 antibody concentration is 1 mg/ml in PBS buffer with 2% sucrose. For longer periods of storage, store at 20°C. Avoid repeat freeze-thaw cycles.

Precautions

SLC29A2 antibody - C-terminal region is for research use only and not for use in diagnostic or therapeutic procedures.

SLC29A2 antibody - C-terminal region - Protein Information**Name** SLC29A2 ([HGNC:11004](#))**Synonyms** DER12, ENT2, HNP36**Function**

Bidirectional uniporter involved in the facilitative transport of nucleosides and nucleobases, and contributes to maintaining their cellular homeostasis (PubMed:10722669, PubMed:10722669).

href="http://www.uniprot.org/citations/12527552" target="_blank">12527552, PubMed:12590919, PubMed:16214850, PubMed:21795683, PubMed:9396714, PubMed:9478986). Functions as a Na(+)-independent, passive transporter (PubMed:9478986). Involved in the transport of nucleosides such as inosine, adenosine, uridine, thymidine, cytidine and guanosine (PubMed:10722669, PubMed:12527552, PubMed:12590919, PubMed:16214850, PubMed:21795683, PubMed:9396714, PubMed:9478986). Also able to transport purine nucleobases (hypoxanthine, adenine, guanine) and pyrimidine nucleobases (thymine, uracil) (PubMed:16214850, PubMed:21795683). Involved in nucleoside transport at basolateral membrane of kidney cells, allowing liver absorption of nucleoside metabolites (PubMed:12527552). Mediates apical nucleoside uptake into Sertoli cells, thereby regulating the transport of nucleosides in testis across the blood-testis-barrier (PubMed:23639800). Mediates both the influx and efflux of hypoxanthine in skeletal muscle microvascular endothelial cells to control the amount of intracellular hypoxanthine available for xanthine oxidase-mediated ROS production (By similarity).

Cellular Location

Apical cell membrane; Multi-pass membrane protein. Basolateral cell membrane; Multi-pass membrane protein. Note=Localized to the apical membrane of Sertoli cells.

Tissue Location

Highly expressed in skeletal muscle (PubMed:9478986). Expressed in liver, lung, placenta, brain, heart, kidney and ovarian tissues (PubMed:9478986). Expressed in testis at the blood-brain-barrier (PubMed:23639800).

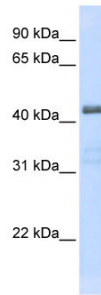
SLC29A2 antibody - C-terminal region - Protocols

Provided below are standard protocols that you may find useful for product applications.

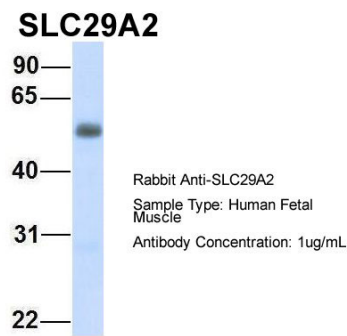
- [Western Blot](#)
- [Blocking Peptides](#)
- [Dot Blot](#)
- [Immunohistochemistry](#)
- [Immunofluorescence](#)
- [Immunoprecipitation](#)
- [Flow Cytometry](#)
- [Cell Culture](#)

SLC29A2 antibody - C-terminal region - Images

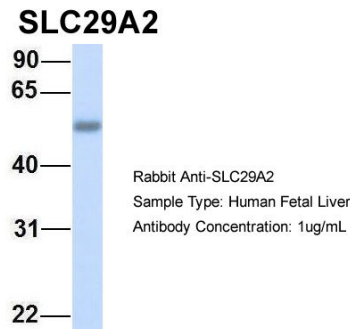




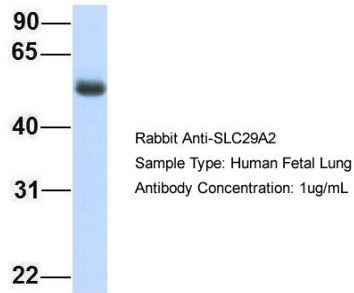
WB Suggested Anti-SLC29A2 Antibody Titration: 0.2-1 µg/ml
ELISA Titer: 1:312500
Positive Control: Transfected 293T



Host:Rabbit
Target Name:SLC29A2
Sample Tissue:Human Fetal Muscle
Antibody Dilution: 1.0µg/ml



Host:Rabbit
Target Name:SLC29A2
Sample Tissue:Human Fetal Liver
Antibody Dilution: 1.0µg/ml

SLC29A2

Host:Rabbit

Target Name:SLC29A2

Sample Tissue:Human Fetal Lung

Antibody Dilution: 1.0µg/ml

SLC29A2 antibody - C-terminal region - References

Bone,D.B.Am.J.Physiol.HeartCirc.Physiol.293(6),H3325-H3332(2007)ReconstitutionandStorage:Forshorttermuse,storeat2-8Cupto1week.Forlongtermstorage,storeat-20Cin small aliquotstopreventfreeze-thawcycles.