

Slc7a3 antibody - middle region
Rabbit Polyclonal Antibody
Catalog # AI12322**Specification**

Slc7a3 antibody - middle region - Product Information

Application	WB
Primary Accession	P70423
Other Accession	NM_007515 , NP_031541
Reactivity	Human, Mouse, Rat, Rabbit, Pig, Horse, Bovine, Guinea Pig, Dog
Predicted	Mouse, Rat, Rabbit, Pig, Chicken, Horse, Bovine, Guinea Pig, Dog
Host	Rabbit
Clonality	Polyclonal
Calculated MW	67kDa KDa

Slc7a3 antibody - middle region - Additional Information**Gene ID** 11989**Alias Symbol** **Atrc3, CAT3, SLC7A1, SLC7A2****Other Names**

Cationic amino acid transporter 3, CAT-3, CAT3, Cationic amino acid transporter y+, Solute carrier family 7 member 3, Slc7a3, Atrc3, Cat3

Format

Liquid. Purified antibody supplied in 1x PBS buffer with 0.09% (w/v) sodium azide and 2% sucrose.

Reconstitution & Storage

Add 50 ul of distilled water. Final anti-Slc7a3 antibody concentration is 1 mg/ml in PBS buffer with 2% sucrose. For longer periods of storage, store at 20°C. Avoid repeat freeze-thaw cycles.

Precautions

Slc7a3 antibody - middle region is for research use only and not for use in diagnostic or therapeutic procedures.

Slc7a3 antibody - middle region - Protein Information**Name** Slc7a3 {ECO:0000312|MGI:MGI:1100521}**Synonyms** Atrc3, Cat3**Function**

Uniporter that mediates the uptake of cationic L-amino acids such as L-arginine, L-lysine and L-ornithine (PubMed:9334265). The transport is sodium ions- and pH-independent, moderately trans- stimulated and is mediated by passive diffusion (PubMed:9334265).

Cellular Location

Cell membrane; Multi-pass membrane protein.

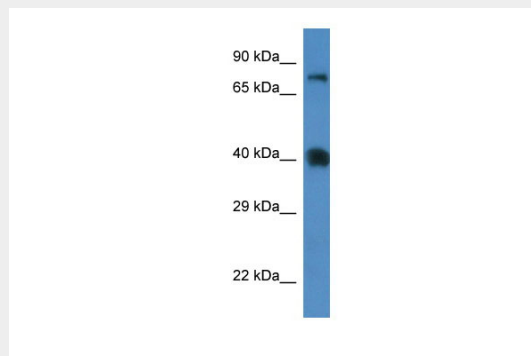
Tissue Location

Expressed in adult brain and in a wide variety of embryonic tissues.

Slc7a3 antibody - middle region - Protocols

Provided below are standard protocols that you may find useful for product applications.

- [Western Blot](#)
- [Blocking Peptides](#)
- [Dot Blot](#)
- [Immunohistochemistry](#)
- [Immunofluorescence](#)
- [Immunoprecipitation](#)
- [Flow Cytometry](#)
- [Cell Culture](#)

Slc7a3 antibody - middle region - Images

WB Suggested Anti-Slc7a3 Antibody Titration: 1.0 µg/ml
Positive Control: Mouse Spleen