

Slc16a3 antibody - N-terminal region
Rabbit Polyclonal Antibody
Catalog # AI12321

Specification

Slc16a3 antibody - N-terminal region - Product Information

Application	WB
Primary Accession	P57787
Other Accession	NM_030696 , NP_109621
Reactivity	Human, Mouse, Rat, Rabbit, Zebrafish, Pig, Horse, Bovine, Guinea Pig, Dog
Predicted	Human, Mouse, Rat, Rabbit, Zebrafish, Bovine, Dog
Host	Rabbit
Clonality	Polyclonal
Calculated MW	50kDa KDa

Slc16a3 antibody - N-terminal region - Additional Information

Gene ID 80879

Alias Symbol **Mct3, Mct4**
Other Names
Monocarboxylate transporter 4, MCT 4, Solute carrier family 16 member 3, Slc16a3, Mct4

Format

Liquid. Purified antibody supplied in 1x PBS buffer with 0.09% (w/v) sodium azide and 2% sucrose.

Reconstitution & Storage

Add 50 ul of distilled water. Final anti-Slc16a3 antibody concentration is 1 mg/ml in PBS buffer with 2% sucrose. For longer periods of storage, store at 20°C. Avoid repeat freeze-thaw cycles.

Precautions

Slc16a3 antibody - N-terminal region is for research use only and not for use in diagnostic or therapeutic procedures.

Slc16a3 antibody - N-terminal region - Protein Information

Name Slc16a3

Synonyms Mct4

Function

Proton-dependent transporter of monocarboxylates such as L- lactate and pyruvate (By similarity). Plays a predominant role in the L-lactate efflux from highly glycolytic cells (Probable).

Cellular Location

Cell membrane {ECO:0000250|UniProtKB:O15427}; Multi-pass membrane protein. Basolateral cell

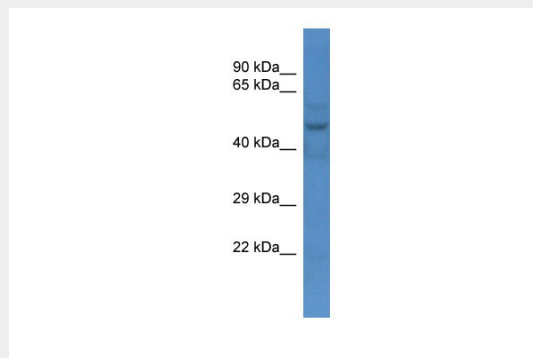
membrane {ECO:0000250|UniProtKB:O15427}; Multi-pass membrane protein. Note=Plasma membrane localization is dependent upon the BSG/MCT4 interaction. Basolateral sorting signals (BLSS) in C-terminal cytoplasmic tail ensure its basolateral expression in polarised epithelial cells. {ECO:0000250|UniProtKB:O15427}

Slc16a3 antibody - N-terminal region - Protocols

Provided below are standard protocols that you may find useful for product applications.

- [Western Blot](#)
- [Blocking Peptides](#)
- [Dot Blot](#)
- [Immunohistochemistry](#)
- [Immunofluorescence](#)
- [Immunoprecipitation](#)
- [Flow Cytometry](#)
- [Cell Culture](#)

Slc16a3 antibody - N-terminal region - Images



WB Suggested Anti-Slc16a3 Antibody Titration: 1.0 µg/ml
Positive Control: Mouse Liver