

CDC23 antibody - N-terminal region
Rabbit Polyclonal Antibody
Catalog # AI12210**Specification**

CDC23 antibody - N-terminal region - Product Information

Application	WB
Primary Accession	O9UJX2
Other Accession	NM_004661 , NP_004652
Reactivity	Human, Mouse, Rat, Rabbit, Zebrafish, Pig, Horse, Bovine, Guinea Pig, Dog
Predicted	Human, Mouse, Rat, Rabbit, Zebrafish, Chicken, Dog
Host	Rabbit
Clonality	Polyclonal
Calculated MW	66kDa KDa

CDC23 antibody - N-terminal region - Additional Information**Gene ID** 8697**Alias Symbol** **APC8, CUT23, ANAPC8****Other Names**

Cell division cycle protein 23 homolog, Anaphase-promoting complex subunit 8, APC8, Cyclosome subunit 8, CDC23, ANAPC8

Format

Liquid. Purified antibody supplied in 1x PBS buffer with 0.09% (w/v) sodium azide and 2% sucrose.

Reconstitution & Storage

Add 100 ul of distilled water. Final anti-CDC23 antibody concentration is 1 mg/ml in PBS buffer with 2% sucrose. For longer periods of storage, store at 20°C. Avoid repeat freeze-thaw cycles.

Precautions

CDC23 antibody - N-terminal region is for research use only and not for use in diagnostic or therapeutic procedures.

CDC23 antibody - N-terminal region - Protein Information**Name** CDC23**Synonyms** ANAPC8**Function**

Component of the anaphase promoting complex/cyclosome (APC/C), a cell cycle-regulated E3 ubiquitin ligase that controls progression through mitosis and the G1 phase of the cell cycle (PubMed:18485873). The APC/C complex acts by mediating ubiquitination and subsequent degradation of target

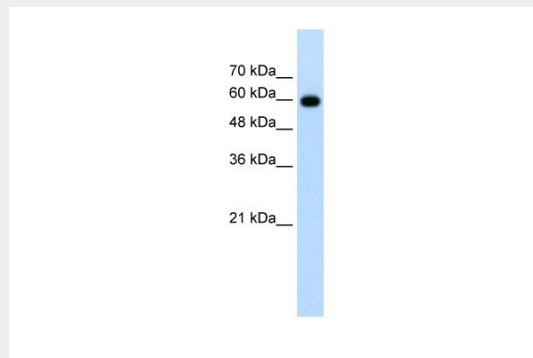
proteins: it mainly mediates the formation of 'Lys-11'-linked polyubiquitin chains and, to a lower extent, the formation of 'Lys-48'- and 'Lys-63'-linked polyubiquitin chains (PubMed:18485873). The APC/C complex catalyzes assembly of branched 'Lys-11'-/'Lys-48'-linked branched ubiquitin chains on target proteins (PubMed:29033132).

CDC23 antibody - N-terminal region - Protocols

Provided below are standard protocols that you may find useful for product applications.

- [Western Blot](#)
- [Blocking Peptides](#)
- [Dot Blot](#)
- [Immunohistochemistry](#)
- [Immunofluorescence](#)
- [Immunoprecipitation](#)
- [Flow Cytometry](#)
- [Cell Culture](#)

CDC23 antibody - N-terminal region - Images



WB Suggested Anti-CDC23 Antibody Titration: 1.25µg/ml

Positive Control: Jurkat cell lysate

CDC23 is supported by BioGPS gene expression data to be expressed in Jurkat