

UBE2L3 antibody - C-terminal region
Rabbit Polyclonal Antibody
Catalog # AI12207**Specification**

UBE2L3 antibody - C-terminal region - Product Information

Application	IHC, WB
Primary Accession	P68036
Other Accession	NM_004739 , NP_003338
Reactivity	Human, Mouse, Rat, Rabbit, Zebrafish, Pig, Horse, Bovine, Guinea Pig, Dog
Predicted	Human, Mouse, Rat, Rabbit, Zebrafish, Pig, Guinea Pig, Dog
Host	Rabbit
Clonality	Polyclonal
Calculated MW	75kDa KDa

UBE2L3 antibody - C-terminal region - Additional Information**Gene ID** 7332**Alias Symbol** **E2-F1, L-UBC, UBCH7, UbcM4****Other Names**

Ubiquitin-conjugating enzyme E2 L3, 6.3.2.19, L-UBC, UbcH7, Ubiquitin carrier protein L3, Ubiquitin-conjugating enzyme E2-F1, Ubiquitin-protein ligase L3, UBE2L3, UBCE7, UBCH7

Format

Liquid. Purified antibody supplied in 1x PBS buffer with 0.09% (w/v) sodium azide and 2% sucrose.

Reconstitution & Storage

Add 100 ul of distilled water. Final anti-UBE2L3 antibody concentration is 1 mg/ml in PBS buffer with 2% sucrose. For longer periods of storage, store at 20°C. Avoid repeat freeze-thaw cycles.

Precautions

UBE2L3 antibody - C-terminal region is for research use only and not for use in diagnostic or therapeutic procedures.

UBE2L3 antibody - C-terminal region - Protein Information**Name** UBE2L3**Synonyms** UBCE7, UBCH7**Function**

Ubiquitin-conjugating enzyme E2 that specifically acts with HECT-type and RBR family E3 ubiquitin-protein ligases. Does not function with most RING-containing E3 ubiquitin-protein ligases because it lacks intrinsic E3-independent reactivity with lysine; in contrast, it has activity with the RBR family E3 enzymes, such as PRKN, RNF31 and ARIH1, that function like RING-HECT hybrids.

Accepts ubiquitin from the E1 complex and catalyzes its covalent attachment to other proteins. Mediates ubiquitination by the CUL9-RBX1 complex (PubMed:38605244). In vitro catalyzes 'Lys-11'-linked polyubiquitination. Involved in the selective degradation of short-lived and abnormal proteins. Down- regulated during the S-phase it is involved in progression through the cell cycle. Regulates nuclear hormone receptors transcriptional activity. May play a role in myelopoiesis.

Cellular Location

Nucleus. Cytoplasm

Tissue Location

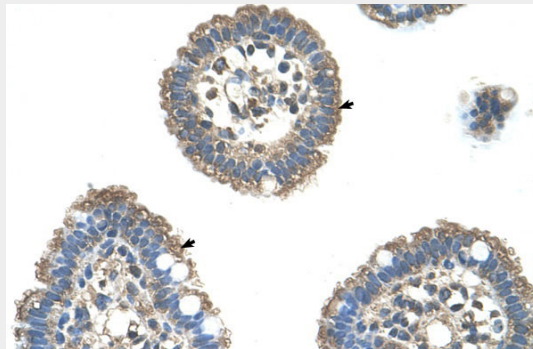
Ubiquitous, with highest expression in testis.

UBE2L3 antibody - C-terminal region - Protocols

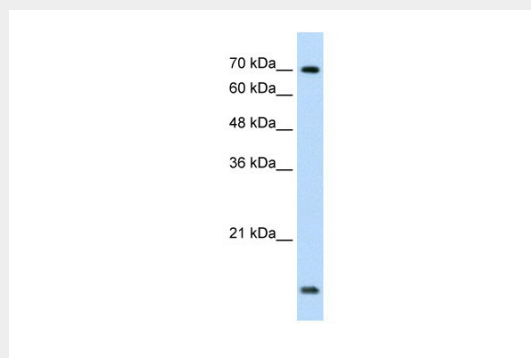
Provided below are standard protocols that you may find useful for product applications.

- [Western Blot](#)
- [Blocking Peptides](#)
- [Dot Blot](#)
- [Immunohistochemistry](#)
- [Immunofluorescence](#)
- [Immunoprecipitation](#)
- [Flow Cytometry](#)
- [Cell Culture](#)

UBE2L3 antibody - C-terminal region - Images



Human Intestine



WB Suggested Anti-UBE2L3 Antibody Titration: 1.25 μ g/ml

Positive Control: Jurkat cell lysate

There is BioGPS gene expression data showing that UBE2L3 is expressed in Jurkat