

UBE2D1 antibody - middle region
Rabbit Polyclonal Antibody
Catalog # AI12203**Specification**

UBE2D1 antibody - middle region - Product Information

Application	WB
Primary Accession	P51668
Other Accession	NM_001204880 , NP_003329
Reactivity	Human, Mouse, Rat, Rabbit, Zebrafish, Pig, Goat, Horse, Bovine, Guinea Pig, Dog
Predicted Host	Mouse, Zebrafish, Pig, Chicken, Goat, Dog
Clonality	Rabbit
Calculated MW	Polyclonal 16kDa KDa

UBE2D1 antibody - middle region - Additional Information**Gene ID 7321**

Alias Symbol **E2(17)KB1, SFT, UBC4/5, UBCH5, UBCH5A**

Other Names
Ubiquitin-conjugating enzyme E2 D1, 6.3.2.19, Stimulator of Fe transport, SFT, UBC4/5 homolog, Ubch5, Ubiquitin carrier protein D1, Ubiquitin-conjugating enzyme E2(17)KB 1, Ubiquitin-conjugating enzyme E2-17 kDa 1, Ubiquitin-protein ligase D1, UBE2D1, SFT, UBC5A, UBCH5, UBCH5A

Format

Liquid. Purified antibody supplied in 1x PBS buffer with 0.09% (w/v) sodium azide and 2% sucrose.

Reconstitution & Storage

Add 100 ul of distilled water. Final anti-UBE2D1 antibody concentration is 1 mg/ml in PBS buffer with 2% sucrose. For longer periods of storage, store at 20°C. Avoid repeat freeze-thaw cycles.

Precautions

UBE2D1 antibody - middle region is for research use only and not for use in diagnostic or therapeutic procedures.

UBE2D1 antibody - middle region - Protein Information

Name UBE2D1

Synonyms SFT, UBC5A, UBCH5, UBCH5A

Function

Accepts ubiquitin from the E1 complex and catalyzes its covalent attachment to other proteins (PubMed:22496338). In vitro catalyzes 'Lys-48'-linked polyubiquitination (PubMed:<a

<http://www.uniprot.org/citations/20061386> target="_blank">20061386). Mediates the selective degradation of short-lived and abnormal proteins. Functions in the E6/E6-AP-induced ubiquitination of p53/TP53. Mediates ubiquitination of PEX5 and auto-ubiquitination of STUB1, TRAF6 and TRIM63/MURF1 (PubMed:18042044, PubMed:18359941). Ubiquitinates STUB1-associated HSP90AB1 in vitro (PubMed:18042044). Lacks inherent specificity for any particular lysine residue of ubiquitin (PubMed:18042044). Essential for viral activation of IRF3 (PubMed:19854139). Mediates polyubiquitination of CYP3A4 (PubMed:19103148).

Cellular Location

Cytoplasm.

Tissue Location

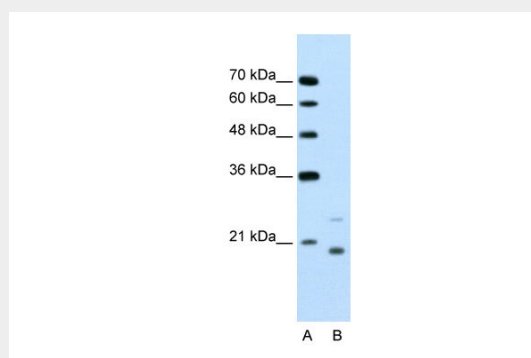
Ubiquitous. Up-regulated in livers of iron- overloaded patients with hereditary hemochromatosis

UBE2D1 antibody - middle region - Protocols

Provided below are standard protocols that you may find useful for product applications.

- [Western Blot](#)
- [Blocking Peptides](#)
- [Dot Blot](#)
- [Immunohistochemistry](#)
- [Immunofluorescence](#)
- [Immunoprecipitation](#)
- [Flow Cytometry](#)
- [Cell Culture](#)

UBE2D1 antibody - middle region - Images



WB Suggested Anti-UBE2D1 Antibody Titration: 1.25µg/ml
Positive Control: Jurkat cell lysate