

NR2F1 antibody - N-terminal region
Rabbit Polyclonal Antibody
Catalog # AI12156**Specification**

NR2F1 antibody - N-terminal region - Product Information

Application	WB
Primary Accession	P10589
Other Accession	NM_005654 , NP_005645
Reactivity	Human, Mouse, Rat, Zebrafish, Pig, Bovine
Predicted	Human, Mouse, Rat, Pig
Host	Rabbit
Clonality	Polyclonal
Calculated MW	46kDa KDa

NR2F1 antibody - N-terminal region - Additional Information**Gene ID** 7025**Alias Symbol** COUP-TF1, EAR-3, EAR3, ERBAL3, NR2F2, SVP44, TCFCOUP1, TFCOUP1**Other Names**

COUP transcription factor 1, COUP-TF1, COUP transcription factor I, COUP-TF I, Nuclear receptor subfamily 2 group F member 1, V-erbA-related protein 3, EAR-3, NR2F1, EAR3, ERBAL3, TFCOUP1

Format

Liquid. Purified antibody supplied in 1x PBS buffer with 0.09% (w/v) sodium azide and 2% sucrose.

Reconstitution & Storage

Add 50 ul of distilled water. Final anti-NR2F1 antibody concentration is 1 mg/ml in PBS buffer with 2% sucrose. For longer periods of storage, store at 20°C. Avoid repeat freeze-thaw cycles.

Precautions

NR2F1 antibody - N-terminal region is for research use only and not for use in diagnostic or therapeutic procedures.

NR2F1 antibody - N-terminal region - Protein Information**Name** NR2F1**Synonyms** EAR3, ERBAL3, TFCOUP1**Function**

Coup (chicken ovalbumin upstream promoter) transcription factor binds to the ovalbumin promoter and, in conjunction with another protein (S300-II) stimulates initiation of transcription. Binds to both direct repeats and palindromes of the 5'-AGGTCA-3' motif. Represses transcriptional activity of LHCG.

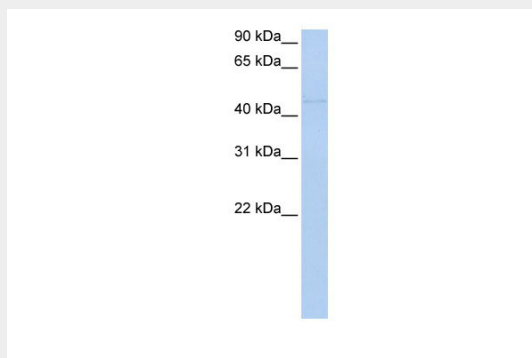
Cellular Location

Nucleus.

NR2F1 antibody - N-terminal region - Protocols

Provided below are standard protocols that you may find useful for product applications.

- [Western Blot](#)
- [Blocking Peptides](#)
- [Dot Blot](#)
- [Immunohistochemistry](#)
- [Immunofluorescence](#)
- [Immunoprecipitation](#)
- [Flow Cytometry](#)
- [Cell Culture](#)

NR2F1 antibody - N-terminal region - Images

WB Suggested Anti-NR2F1 Antibody Titration: 0.2-1 μ g/ml

ELISA Titer: 1:62500

Positive Control: Transfected 293T

NR2F1 antibody - N-terminal region - References

Schafer, G., (2008) Cancer Res. 68(2), 457-466 Reconstitution and Storage: For short term use, store at 2-8C upto 1 week. For long term storage, store at -20C in small aliquots to prevent freeze-thaw cycles.