

**CD209 Antibody - C-terminal region**  
**Rabbit Polyclonal Antibody**  
**Catalog # AI12122****Specification**

---

**CD209 Antibody - C-terminal region - Product Information**

Application	<b>WB</b>
Primary Accession	<a href="#">O9NNX6</a>
Other Accession	<a href="#">NM_001144899</a> , <a href="#">NP_001138371</a>
Reactivity	<b>Human</b>
Predicted	<b>Human</b>
Host	<b>Rabbit</b>
Clonality	<b>Polyclonal</b>
Calculated MW	<b>26kDa KDa</b>

**CD209 Antibody - C-terminal region - Additional Information****Gene ID** 30835**Alias Symbol** **CDSIGN, CLEC4L, DC-SIGN, DC-SIGN1****Other Names**

CD209 antigen, C-type lectin domain family 4 member L, Dendritic cell-specific ICAM-3-grabbing non-integrin 1, DC-SIGN, DC-SIGN1, CD209, CD209, CLEC4L

**Format**

Liquid. Purified antibody supplied in 1x PBS buffer with 0.09% (w/v) sodium azide and 2% sucrose.

**Reconstitution & Storage**

Add 50 ul of distilled water. Final anti-CD209 antibody concentration is 1 mg/ml in PBS buffer with 2% sucrose. For longer periods of storage, store at 20°C. Avoid repeat freeze-thaw cycles.

**Precautions**

CD209 Antibody - C-terminal region is for research use only and not for use in diagnostic or therapeutic procedures.

**CD209 Antibody - C-terminal region - Protein Information****Name** CD209**Synonyms** CLEC4L**Function**

Pathogen-recognition receptor expressed on the surface of immature dendritic cells (DCs) and involved in initiation of primary immune response. Thought to mediate the endocytosis of pathogens which are subsequently degraded in lysosomal compartments. The receptor returns to the cell membrane surface and the pathogen-derived antigens are presented to resting T-cells via MHC class II proteins to initiate the adaptive immune response.

### Cellular Location

[Isoform 1]: Cell membrane; Single- pass type II membrane protein [Isoform 3]: Cell membrane; Single- pass type II membrane protein [Isoform 5]: Cell membrane; Single- pass type II membrane protein [Isoform 7]: Secreted. [Isoform 9]: Secreted. [Isoform 11]: Secreted.

### Tissue Location

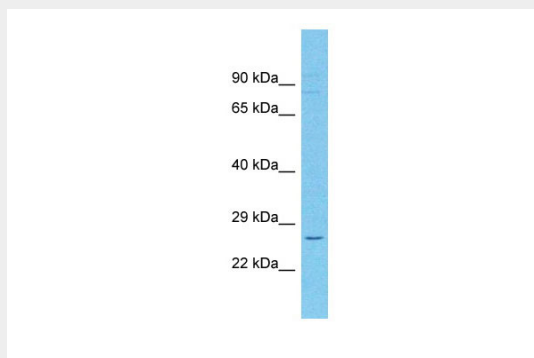
Predominantly expressed in dendritic cells and in DC-residing tissues. Also found in placental macrophages, endothelial cells of placental vascular channels, peripheral blood mononuclear cells, and THP-1 monocytes.

### CD209 Antibody - C-terminal region - Protocols

Provided below are standard protocols that you may find useful for product applications.

- [Western Blot](#)
- [Blocking Peptides](#)
- [Dot Blot](#)
- [Immunohistochemistry](#)
- [Immunofluorescence](#)
- [Immunoprecipitation](#)
- [Flow Cytometry](#)
- [Cell Culture](#)

### CD209 Antibody - C-terminal region - Images



Host: Rabbit  
Target Name: CD209  
Sample Tissue: large intestine Tumor lysates  
Antibody Dilution: 1.0 $\mu$ g/ml