

DCUN1D1 antibody - middle region
Rabbit Polyclonal Antibody
Catalog # AI12121**Specification**

DCUN1D1 antibody - middle region - Product Information

Application	WB
Primary Accession	O96GG9
Other Accession	NM_020640 , NP_065691
Reactivity	Human, Mouse, Rat, Rabbit, Horse, Bovine, Guinea Pig, Dog
Predicted	Human, Mouse, Rat, Rabbit, Chicken, Horse, Dog
Host	Rabbit
Clonality	Polyclonal
Calculated MW	30kDa KDa

DCUN1D1 antibody - middle region - Additional Information**Gene ID** 54165**Alias Symbol** DCUN1L1, RP42, SCCRO, SCRO, Tes3, DCNL1**Other Names**

DCN1-like protein 1, DCUN1 domain-containing protein 1, Defective in cullin neddylation protein 1-like protein 1, Squamous cell carcinoma-related oncogene, DCUN1D1, DCUN1L1, RP42, SCCRO

Format

Liquid. Purified antibody supplied in 1x PBS buffer with 0.09% (w/v) sodium azide and 2% sucrose.

Reconstitution & Storage

Add 50 ul of distilled water. Final anti-DCUN1D1 antibody concentration is 1 mg/ml in PBS buffer with 2% sucrose. For longer periods of storage, store at 20°C. Avoid repeat freeze-thaw cycles.

Precautions

DCUN1D1 antibody - middle region is for research use only and not for use in diagnostic or therapeutic procedures.

DCUN1D1 antibody - middle region - Protein Information**Name** DCUN1D1 ([HGNC:18184](#))**Function**

Part of an E3 ubiquitin ligase complex for neddylation (PubMed:18826954). Promotes neddylation of cullin components of E3 cullin-RING ubiquitin ligase complexes (PubMed:19617556, PubMed:23201271, PubMed:23201271, PubMed:23201271).

href="http://www.uniprot.org/citations/23401859" target="_blank">23401859, PubMed:26906416). Acts by binding to cullin-RBX1 complexes in the cytoplasm and promoting their nuclear translocation, enhancing recruitment of E2-NEDD8 (UBE2M-NEDD8) thioester to the complex, and optimizing the orientation of proteins in the complex to allow efficient transfer of NEDD8 from the E2 to the cullin substrates. Involved in the release of inhibitory effects of CAND1 on cullin-RING ligase E3 complex assembly and activity (PubMed:25349211, PubMed:28581483). Acts also as an oncogene facilitating malignant transformation and carcinogenic progression (By similarity).

Cellular Location

Nucleus. Cytoplasm Note=The ubiquitinated form is localized in the cytoplasm

Tissue Location

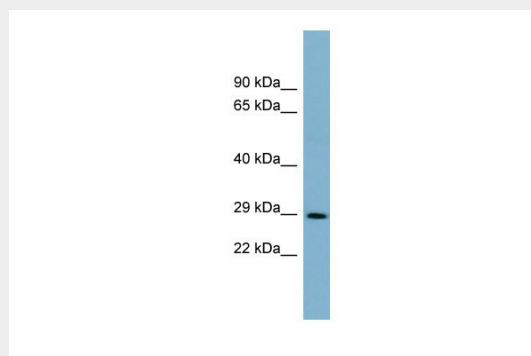
Expressed in pancreas, kidney, placenta, brain and heart. Weakly or not expressed in liver, skeletal muscle and lung Strongly overexpressed in thyroid tumors, bronchioloalveolar carcinomas, and malignant tissues of squamous cell carcinoma of the oral tongue. Not overexpressed in aggressive adrenocortical carcinomas

DCUN1D1 antibody - middle region - Protocols

Provided below are standard protocols that you may find useful for product applications.

- [Western Blot](#)
- [Blocking Peptides](#)
- [Dot Blot](#)
- [Immunohistochemistry](#)
- [Immunofluorescence](#)
- [Immunoprecipitation](#)
- [Flow Cytometry](#)
- [Cell Culture](#)

DCUN1D1 antibody - middle region - Images



WB Suggested Anti-DCUN1D1 Antibody Titration: 0.2-1 µg/ml

ELISA Titer: 1:312500

Positive Control: PANC1 cell lysate

DCUN1D1 is supported by BioGPS gene expression data to be expressed in PANC1

DCUN1D1 antibody - middle region - References

0ReconstitutionandStorage:Forshorttermuse,storeat2-8Cupto1week.Forlongtermstorage,storeat-20

Cin small aliquot stop prevent freeze-thaw cycles.