

Rbm28 Antibody - C-terminal region
Rabbit Polyclonal Antibody
Catalog # AI12095**Specification**

Rbm28 Antibody - C-terminal region - Product Information

Application	WB
Primary Accession	O8CGC6
Other Accession	AAH18373
Reactivity	Human, Mouse, Horse, Bovine, Guinea Pig, Dog
Predicted	Human, Mouse, Pig, Horse, Bovine, Guinea Pig, Dog
Host	Rabbit
Clonality	Polyclonal
Calculated MW	65kDa KDa

Rbm28 Antibody - C-terminal region - Additional Information**Gene ID** 68272**Other Names**

RNA-binding protein 28, RNA-binding motif protein 28, Rbm28

Format

Liquid. Purified antibody supplied in 1x PBS buffer with 0.09% (w/v) sodium azide and 2% sucrose.

Reconstitution & Storage

Add 50 ul of distilled water. Final anti-Rbm28 antibody concentration is 1 mg/ml in PBS buffer with 2% sucrose. For longer periods of storage, store at 20°C. Avoid repeat freeze-thaw cycles.

Precautions

Rbm28 Antibody - C-terminal region is for research use only and not for use in diagnostic or therapeutic procedures.

Rbm28 Antibody - C-terminal region - Protein Information**Name** Rbm28**Function**

Nucleolar component of the spliceosomal ribonucleoprotein complexes.

Cellular Location

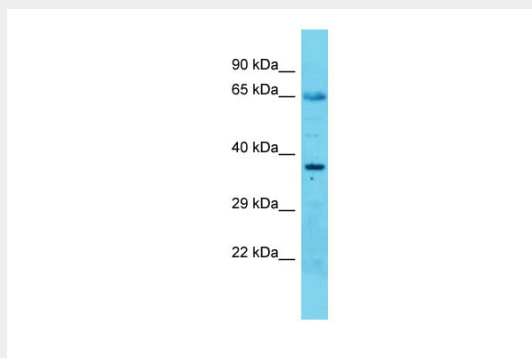
Nucleus, nucleolus.

Rbm28 Antibody - C-terminal region - Protocols

Provided below are standard protocols that you may find useful for product applications.

- [Western Blot](#)
- [Blocking Peptides](#)
- [Dot Blot](#)
- [Immunohistochemistry](#)
- [Immunofluorescence](#)
- [Immunoprecipitation](#)
- [Flow Cytometry](#)
- [Cell Culture](#)

Rbm28 Antibody - C-terminal region - Images



Host: Rabbit
Target Name: Rbm28
Sample Tissue: Mouse Heart lysates
Antibody Dilution: 1.0µg/ml