

**RPL6 antibody - N-terminal region**  
**Rabbit Polyclonal Antibody**  
**Catalog # AI12090****Specification****RPL6 antibody - N-terminal region - Product Information**

Application	WB
Primary Accession	<a href="#">Q02878</a>
Other Accession	<a href="#">NM_001024662</a> , <a href="#">NP_001019833</a>
Reactivity	Human, Mouse, Rat, Horse, Bovine, Guinea Pig, Dog
Predicted Host	Human, Mouse, Rat, Bovine, Dog
Clonality	Rabbit
Calculated MW	Polyclonal 32kDa KDa

**RPL6 antibody - N-terminal region - Additional Information****Gene ID** 6128

Alias Symbol	L6, TXREB1, SHUJUN-2, TAXREB107
<b>Other Names</b>	
60S ribosomal protein L6, Neoplasm-related protein C140, Tax-responsive enhancer element-binding protein 107, TaxREB107, RPL6, TXREB1	

**Format**

Liquid. Purified antibody supplied in 1x PBS buffer with 0.09% (w/v) sodium azide and 2% sucrose.

**Reconstitution & Storage**

Add 100 ul of distilled water. Final anti-RPL6 antibody concentration is 1 mg/ml in PBS buffer with 2% sucrose. For longer periods of storage, store at 20°C. Avoid repeat freeze-thaw cycles.

**Precautions**

RPL6 antibody - N-terminal region is for research use only and not for use in diagnostic or therapeutic procedures.

**RPL6 antibody - N-terminal region - Protein Information****Name** RPL6**Synonyms** TXREB1**Function**

Component of the large ribosomal subunit (PubMed: <a href="http://www.uniprot.org/citations/12962325" target="\_blank">12962325</a>, PubMed: <a href="http://www.uniprot.org/citations/23636399" target="\_blank">23636399</a>, PubMed: <a href="http://www.uniprot.org/citations/25901680" target="\_blank">25901680</a>, PubMed: <a href="http://www.uniprot.org/citations/25957688" target="\_blank">25957688</a>, PubMed: <a href="http://www.uniprot.org/citations/25957688" target="\_blank">25957688</a>, PubMed: <a href="http://www.uniprot.org/citations/25957688" target="\_blank">25957688</a>, PubMed: <a href="http://www.uniprot.org/citations/25957688" target="\_blank">25957688</a>)

href="http://www.uniprot.org/citations/32669547" target="\_blank">32669547</a>). The ribosome is a large ribonucleoprotein complex responsible for the synthesis of proteins in the cell (PubMed:<a href="http://www.uniprot.org/citations/12962325" target="\_blank">12962325</a>, PubMed:<a href="http://www.uniprot.org/citations/23636399" target="\_blank">23636399</a>, PubMed:<a href="http://www.uniprot.org/citations/25901680" target="\_blank">25901680</a>, PubMed:<a href="http://www.uniprot.org/citations/25957688" target="\_blank">25957688</a>, PubMed:<a href="http://www.uniprot.org/citations/32669547" target="\_blank">32669547</a>).

### Cellular Location

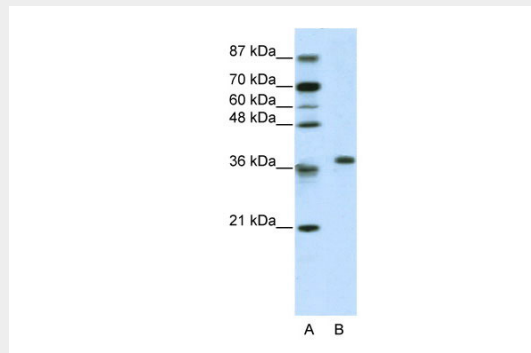
Cytoplasm, cytosol. Cytoplasm Rough endoplasmic reticulum {ECO:0000250|UniProtKB:Q2YGT9} Note=Detected on cytosolic polysomes (PubMed:25957688). Detected in ribosomes that are associated with the rough endoplasmic reticulum (By similarity). {ECO:0000250|UniProtKB:Q2YGT9, ECO:0000269|PubMed:25957688}

### RPL6 antibody - N-terminal region - Protocols

Provided below are standard protocols that you may find useful for product applications.

- [Western Blot](#)
- [Blocking Peptides](#)
- [Dot Blot](#)
- [Immunohistochemistry](#)
- [Immunofluorescence](#)
- [Immunoprecipitation](#)
- [Flow Cytometry](#)
- [Cell Culture](#)

### RPL6 antibody - N-terminal region - Images



WB Suggested Anti-RPL6 Antibody Titration: 2.5µg/ml

ELISA Titer: 1:62500

Positive Control: Jurkat cell lysate

RPL6 is supported by BioGPS gene expression data to be expressed in Jurkat

### RPL6 antibody - N-terminal region - References

Bouwmeester, T., (2004) Nat. Cell Biol. 6(2), 97-105 Reconstitution and Storage: For short term use, store at 2-8°C up to 1 week. For long term storage, store at -20°C in small aliquots to prevent freeze-thaw cycles.