

**KLHL8 antibody - N-terminal region**  
**Rabbit Polyclonal Antibody**  
**Catalog # AI12080****Specification**

---

**KLHL8 antibody - N-terminal region - Product Information**

Application	WB
Primary Accession	<a href="#">O9P2G9</a>
Other Accession	<a href="#">NM_020803</a> , <a href="#">NP_065854</a>
Reactivity	Human, Rat, Rabbit, Pig, Horse, Bovine, Dog
Predicted Host	Human, Rabbit, Pig, Horse, Bovine, Dog
Clonality	Rabbit
Calculated MW	Polyclonal 69kDa KDa

**KLHL8 antibody - N-terminal region - Additional Information****Gene ID** 57563**Alias Symbol** **FLJ46304, KIAA1378**  
**Other Names**  
Kelch-like protein 8, KLHL8, KIAA1378**Format**

Liquid. Purified antibody supplied in 1x PBS buffer with 0.09% (w/v) sodium azide and 2% sucrose.

**Reconstitution & Storage**

Add 50 ul of distilled water. Final anti-KLHL8 antibody concentration is 1 mg/ml in PBS buffer with 2% sucrose. For longer periods of storage, store at 20°C. Avoid repeat freeze-thaw cycles.

**Precautions**

KLHL8 antibody - N-terminal region is for research use only and not for use in diagnostic or therapeutic procedures.

**KLHL8 antibody - N-terminal region - Protein Information****Name** KLHL8**Synonyms** KIAA1378**Function**

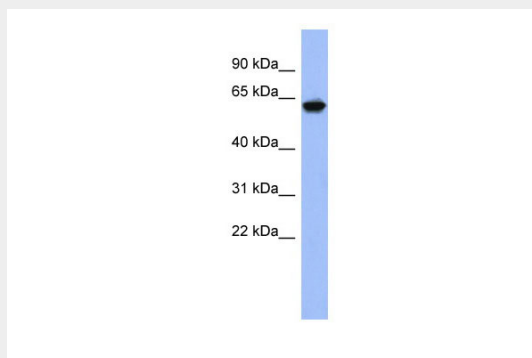
Substrate-specific adapter of a BCR (BTB-CUL3-RBX1) E3 ubiquitin ligase complex required for The BCR(KLHL8) ubiquitin ligase complex mediates ubiquitination and degradation of RAPSN.

**KLHL8 antibody - N-terminal region - Protocols**

Provided below are standard protocols that you may find useful for product applications.

- [Western Blot](#)
- [Blocking Peptides](#)
- [Dot Blot](#)
- [Immunohistochemistry](#)
- [Immunofluorescence](#)
- [Immunoprecipitation](#)
- [Flow Cytometry](#)
- [Cell Culture](#)

#### **KLHL8 antibody - N-terminal region - Images**



WB Suggested Anti-KLHL8 Antibody Titration: 0.2-1 µg/ml

ELISA Titer: 1:62500

Positive Control: Human Thymus

#### **KLHL8 antibody - N-terminal region - References**

Lim, J., (2006) Cell 125(4), 801-814 Reconstitution and Storage: For short term use, store at 2-8°C up to 1 week. For long term storage, store at -20°C in small aliquots to prevent freeze-thaw cycles.