

**FOXG1B antibody - C-terminal region**  
**Rabbit Polyclonal Antibody**  
**Catalog # AI12073****Specification**

---

**FOXG1B antibody - C-terminal region - Product Information**

Application	<b>WB</b>
Primary Accession	<a href="#">Q86XT7</a>
Other Accession	<a href="#">NM_005249</a> , <a href="#">NP_005240</a>
Reactivity	<b>Human, Mouse, Rat, Zebrafish, Horse, Bovine, Dog</b>
Predicted Host	<b>Human, Mouse, Rat, Chicken, Bovine</b>
Clonality	<b>Rabbit</b>
Calculated MW	<b>Polyclonal</b> <b>52kDa KDa</b>

**FOXG1B antibody - C-terminal region - Additional Information**

Alias Symbol	<b>BF1, BF2, QIN, FKH2, HBF2, HFK1, HFK2, HFK3, KHL2, FHKL3, FKHL1, FKHL2, FKHL3, FKHL4, HBF-1, HBF-2, HBF-3, FOXG1A, FOXG1B, FOXG1C, HBF-G2</b>
--------------	--

**Format**

Liquid. Purified antibody supplied in 1x PBS buffer with 0.09% (w/v) sodium azide and 2% sucrose.

**Reconstitution & Storage**

Add 100 ul of distilled water. Final anti-FOXG1B antibody concentration is 1 mg/ml in PBS buffer with 2% sucrose. For longer periods of storage, store at 20°C. Avoid repeat freeze-thaw cycles.

**Precautions**

FOXG1B antibody - C-terminal region is for research use only and not for use in diagnostic or therapeutic procedures.

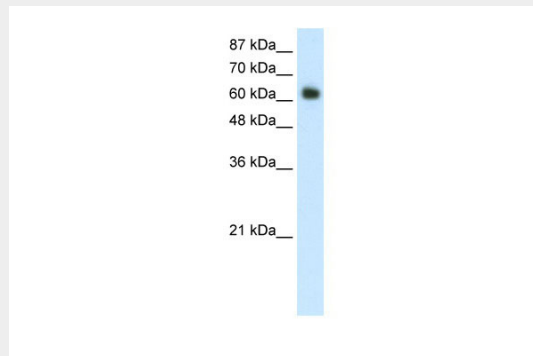
**FOXG1B antibody - C-terminal region - Protein Information****FOXG1B antibody - C-terminal region - Protocols**

Provided below are standard protocols that you may find useful for product applications.

- [Western Blot](#)
- [Blocking Peptides](#)
- [Dot Blot](#)
- [Immunohistochemistry](#)
- [Immunofluorescence](#)
- [Immunoprecipitation](#)
- [Flow Cytometry](#)

- [Cell Culture](#)

### **FOXG1B antibody - C-terminal region - Images**



WB Suggested Anti-FOXG1B Antibody Titration: 1.25 $\mu$ g/ml  
ELISA Titer: 1:312500  
Positive Control: Transfected 293T

### **FOXG1B antibody - C-terminal region - References**

Tan, K., (2003) J. Biol. Chem. 278(23), 20507-20513  
Reconstitution and Storage: For short term use, store at 2-8 $^{\circ}$ C up to 1 week. For long term storage, store at -20 $^{\circ}$ C in small aliquots to prevent freeze-thaw cycles.