

MSLN antibody - middle region
Rabbit Polyclonal Antibody
Catalog # AI11993

Specification

MSLN antibody - middle region - Product Information

Application	WB
Primary Accession	O13421-3
Other Accession	NM_005823 , NP_005814
Reactivity	Human, Mouse, Rat, Pig, Horse, Bovine, Dog
Predicted Host	Human, Mouse, Rat, Horse, Bovine, Dog
Clonality	Rabbit
Calculated MW	Polyclonal 32kDa KDa

MSLN antibody - middle region - Additional Information

Alias Symbol **CAK1, MPF, SMR, SMRP**

Format

Liquid. Purified antibody supplied in 1x PBS buffer with 0.09% (w/v) sodium azide and 2% sucrose.

Reconstitution & Storage

Add 50 ul of distilled water. Final anti-MSLN antibody concentration is 1 mg/ml in PBS buffer with 2% sucrose. For longer periods of storage, store at 20°C. Avoid repeat freeze-thaw cycles.

Precautions

MSLN antibody - middle region is for research use only and not for use in diagnostic or therapeutic procedures.

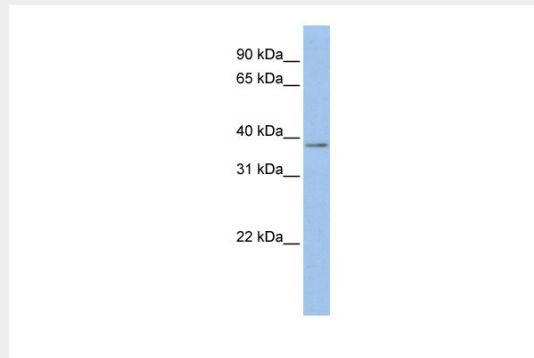
MSLN antibody - middle region - Protein Information

MSLN antibody - middle region - Protocols

Provided below are standard protocols that you may find useful for product applications.

- [Western Blot](#)
- [Blocking Peptides](#)
- [Dot Blot](#)
- [Immunohistochemistry](#)
- [Immunofluorescence](#)
- [Immunoprecipitation](#)
- [Flow Cytometry](#)
- [Cell Culture](#)

MSLN antibody - middle region - Images



WB Suggested Anti-MSLN Antibody Titration: 0.2-1 $\mu\text{g/ml}$
ELISA Titer: 1:312500
Positive Control: MCF7 cell lysate

MSLN antibody - middle region - References

Johnson, M.D., (2008) J. Histochem. Cytochem. 56 (6), 579-585 Reconstitution and Storage: For short term use, store at 2-8C up to 1 week. For long term storage, store at -20C in small aliquots to prevent freeze-thaw cycles.