

HP antibody - N-terminal region
Rabbit Polyclonal Antibody
Catalog # AI11988**Specification**

HP antibody - N-terminal region - Product Information

Application	IHC, WB
Primary Accession	P00738
Other Accession	NM_005143 , NP_005134
Reactivity	Human, Mouse, Rat, Rabbit, Pig, Horse, Dog
Predicted Host	Human, Mouse, Rat, Rabbit, Pig, Dog
Clonality	Rabbit
Calculated MW	Polyclonal 45kDa KDa

HP antibody - N-terminal region - Additional Information**Gene ID** 3240**Alias Symbol** hp2-alpha, BP, HPA1S, HP2ALPHA2**Other Names**

Haptoglobin, Zonulin, Haptoglobin alpha chain, Haptoglobin beta chain, HP

Format

Liquid. Purified antibody supplied in 1x PBS buffer with 0.09% (w/v) sodium azide and 2% sucrose.

Reconstitution & Storage

Add 50 ul of distilled water. Final anti-HP antibody concentration is 1 mg/ml in PBS buffer with 2% sucrose. For longer periods of storage, store at 20°C. Avoid repeat freeze-thaw cycles.

Precautions

HP antibody - N-terminal region is for research use only and not for use in diagnostic or therapeutic procedures.

HP antibody - N-terminal region - Protein Information**Name** HP**Function**

As a result of hemolysis, hemoglobin is found to accumulate in the kidney and is secreted in the urine. Haptoglobin captures, and combines with free plasma hemoglobin to allow hepatic recycling of heme iron and to prevent kidney damage. Haptoglobin also acts as an antioxidant, has antibacterial activity, and plays a role in modulating many aspects of the acute phase response. Hemoglobin/haptoglobin complexes are rapidly cleared by the macrophage CD163 scavenger receptor expressed on the surface of liver Kupfer cells through an endocytic lysosomal degradation pathway.

Cellular Location

Secreted.

Tissue Location

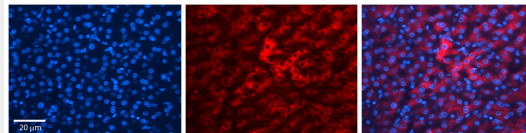
Expressed by the liver and secreted in plasma.

HP antibody - N-terminal region - Protocols

Provided below are standard protocols that you may find useful for product applications.

- [Western Blot](#)
- [Blocking Peptides](#)
- [Dot Blot](#)
- [Immunohistochemistry](#)
- [Immunofluorescence](#)
- [Immunoprecipitation](#)
- [Flow Cytometry](#)
- [Cell Culture](#)

HP antibody - N-terminal region - Images



HP (haptoglobin)antibody - N-terminal region (AI11988)

Catalog Number: AI11988

Formalin Fixed Paraffin Embedded Tissue: Human Liver Tissue Observed Staining: Cytoplasm in hepatocytes

Primary Antibody

Concentration: 1:100

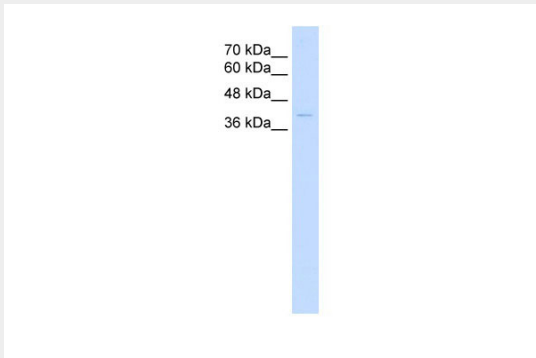
Secondary Antibody: Donkey anti-Rabbit-Cy3

Secondary Antibody

Concentration: 1:200

Magnification: 20X

Exposure Time: 0.5 - 2.0 sec



70 kDa
60 kDa
48 kDa
36 kDa

WB Suggested Anti-HP Antibody Titration: 0.2-1 µg/ml

Positive Control: Jurkat cell lysate

HP antibody - N-terminal region - References

Borsody, M., (2006) Neurology 66 (5), 634-640 Reconstitution and Storage: For short term use, store at 2-8C up to 1 week. For long term storage, store at -20C in small aliquots to prevent freeze-thaw cycles.