

PRF1 antibody - N-terminal region
Rabbit Polyclonal Antibody
Catalog # AI11986

Specification

PRF1 antibody - N-terminal region - Product Information

| | |
|-------------------|---|
| Application | WB |
| Primary Accession | P14222 |
| Other Accession | NM_005041 , NP_005032 |
| Reactivity | Human, Rat, Rabbit, Pig, Horse, Bovine, Dog |
| Predicted Host | Human, Pig, Horse, Bovine, Dog |
| Clonality | Rabbit |
| Calculated MW | Polyclonal 59kDa KDa |

PRF1 antibody - N-terminal region - Additional Information

Gene ID 5551

Alias Symbol FLH2, HPLH2, MGC65093, P1, PFP, PFN1
Other Names Perforin-1, P1, Cytolysin, Lymphocyte pore-forming protein, PFP, PRF1, PFP

Format

Liquid. Purified antibody supplied in 1x PBS buffer with 0.09% (w/v) sodium azide and 2% sucrose.

Reconstitution & Storage

Add 50 ul of distilled water. Final anti-PRF1 antibody concentration is 1 mg/ml in PBS buffer with 2% sucrose. For longer periods of storage, store at 20°C. Avoid repeat freeze-thaw cycles.

Precautions

PRF1 antibody - N-terminal region is for research use only and not for use in diagnostic or therapeutic procedures.

PRF1 antibody - N-terminal region - Protein Information

Name PRF1

Synonyms PFP

Function

Pore-forming protein that plays a key role in granzyme- mediated programmed cell death, and in defense against virus-infected or neoplastic cells (PubMed:20889983, PubMed:21037563, PubMed:24558045, PubMed:9058810, PubMed:<a

[9164947](http://www.uniprot.org/citations/9164947)). Plays an important role in killing other cells that are recognized as non-self by the immune system, e.g. in transplant rejection or some forms of autoimmune disease (PubMed: [9058810](http://www.uniprot.org/citations/9058810)). Can insert into the membrane of target cells in its calcium-bound form, oligomerize and form large pores (PubMed: [20889983](http://www.uniprot.org/citations/20889983)), PubMed: [21037563](http://www.uniprot.org/citations/21037563)). Promotes cytolysis and apoptosis of target cells by mediating the passage and uptake of cytotoxic granzymes (PubMed: [20038786](http://www.uniprot.org/citations/20038786), PubMed: [20225066](http://www.uniprot.org/citations/20225066), PubMed: [24558045](http://www.uniprot.org/citations/24558045), PubMed: [32299851](http://www.uniprot.org/citations/32299851)). Facilitates the delivery of cationic cargo protein, while anionic or neural proteins are not delivered efficiently (PubMed: [24558045](http://www.uniprot.org/citations/24558045)). Perforin pores allow the release of mature caspase-7 (CASP7) into the extracellular milieu (By similarity).

Cellular Location

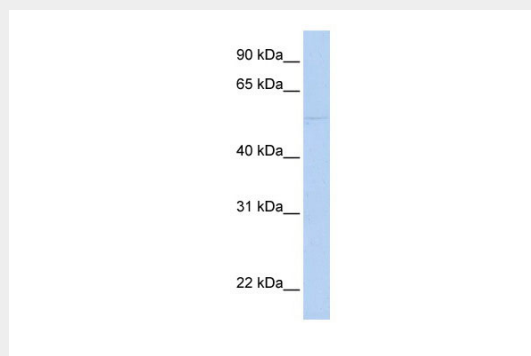
Cytolytic granule. Secreted. Cell membrane; Multi-pass membrane protein. Endosome lumen. Note=Stored in cytolytic granules of cytolytic T-lymphocytes and secreted into the cleft between T- lymphocyte and target cell (PubMed:20038786). Inserts into the cell membrane of target cells and forms pores (PubMed:20889983). Membrane insertion and pore formation requires a major conformation change (PubMed:20889983). May be taken up via endocytosis involving clathrin-coated vesicles and accumulate in a first time in large early endosomes (PubMed:20038786).

PRF1 antibody - N-terminal region - Protocols

Provided below are standard protocols that you may find useful for product applications.

- [Western Blot](#)
- [Blocking Peptides](#)
- [Dot Blot](#)
- [Immunohistochemistry](#)
- [Immunofluorescence](#)
- [Immunoprecipitation](#)
- [Flow Cytometry](#)
- [Cell Culture](#)

PRF1 antibody - N-terminal region - Images



WB Suggested Anti-PRF1 Antibody Titration: 0.2-1 μ g/ml

Positive Control: MCF7 cell lysate

PRF1 antibody - N-terminal region - References

Okur,H., (2008) Leuk. Res. 32 (6), 972-975 Reconstitution and Storage:For short term use, store at 2-8C up to 1 week. For long term storage, store at -20C in small aliquots to prevent freeze-thaw cycles.