

**SEMG2 antibody - N-terminal region**  
**Rabbit Polyclonal Antibody**  
**Catalog # AI11976**

**Specification**

---

**SEMG2 antibody - N-terminal region - Product Information**

Application	WB
Primary Accession	<a href="#">Q02383</a>
Other Accession	<a href="#">NM_003008</a> , <a href="#">NP_002999</a>
Reactivity	Human, Pig
Predicted	Human
Host	Rabbit
Clonality	Polyclonal
Calculated MW	63kDa KDa

**SEMG2 antibody - N-terminal region - Additional Information**

**Gene ID** 6407

**Alias Symbol** SGII  
**Other Names**  
Semenogelin-2, Semenogelin II, SGII, SEMG2

**Format**

Liquid. Purified antibody supplied in 1x PBS buffer with 0.09% (w/v) sodium azide and 2% sucrose.

**Reconstitution & Storage**

Add 50 ul of distilled water. Final anti-SEMG2 antibody concentration is 1 mg/ml in PBS buffer with 2% sucrose. For longer periods of storage, store at 20°C. Avoid repeat freeze-thaw cycles.

**Precautions**

SEMG2 antibody - N-terminal region is for research use only and not for use in diagnostic or therapeutic procedures.

**SEMG2 antibody - N-terminal region - Protein Information**

**Name** SEMG2

**Function**

Participates in the formation of a gel matrix (sperm coagulum) entrapping the accessory gland secretions and ejaculated spermatozoa.

**Cellular Location**

Secreted.

**Tissue Location**

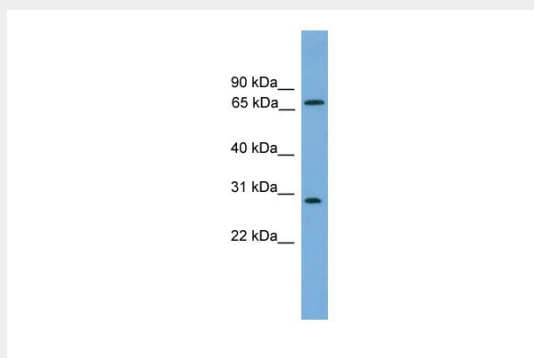
Seminal vesicles, and to a much lesser extent, epididymis

## SEMG2 antibody - N-terminal region - Protocols

Provided below are standard protocols that you may find useful for product applications.

- [Western Blot](#)
- [Blocking Peptides](#)
- [Dot Blot](#)
- [Immunohistochemistry](#)
- [Immunofluorescence](#)
- [Immunoprecipitation](#)
- [Flow Cytometry](#)
- [Cell Culture](#)

## SEMG2 antibody - N-terminal region - Images



WB Suggested Anti-SEMG2 Antibody Titration: 0.2-1  $\mu\text{g/ml}$

ELISA Titer: 1:312500

Positive Control: COLO205 cell lysate