

SEMG1 antibody - N-terminal region
Rabbit Polyclonal Antibody
Catalog # AI11975**Specification**

SEMG1 antibody - N-terminal region - Product Information

Application	IHC, WB
Primary Accession	P04279
Other Accession	NM_003007 , NP_002998
Reactivity	Human, Pig
Predicted	Human
Host	Rabbit
Clonality	Polyclonal
Calculated MW	51kDa KDa

SEMG1 antibody - N-terminal region - Additional Information**Gene ID** 6406**Alias Symbol** MGC14719, SEMG, SGI, CT103, dj172H20.2**Other Names**

Semenogelin-1, Semenogelin I, SGI, Alpha-inhibin-92, Alpha-inhibin-31, Seminal basic protein, SEMG1, SEMG

Format

Liquid. Purified antibody supplied in 1x PBS buffer with 0.09% (w/v) sodium azide and 2% sucrose.

Reconstitution & Storage

Add 100 ul of distilled water. Final anti-SEMG1 antibody concentration is 1 mg/ml in PBS buffer with 2% sucrose. For longer periods of storage, store at 20°C. Avoid repeat freeze-thaw cycles.

Precautions

SEMG1 antibody - N-terminal region is for research use only and not for use in diagnostic or therapeutic procedures.

SEMG1 antibody - N-terminal region - Protein Information**Name** SEMG1**Synonyms** SEMG**Function**

Predominant protein in semen. It participates in the formation of a gel matrix entrapping the accessory gland secretions and ejaculated spermatozoa. Fragments of semenogelin and/or fragments of the related proteins may contribute to the activation of progressive sperm movements as the gel-forming proteins are fragmented by KLK3/PSA.

Cellular Location

Secreted.

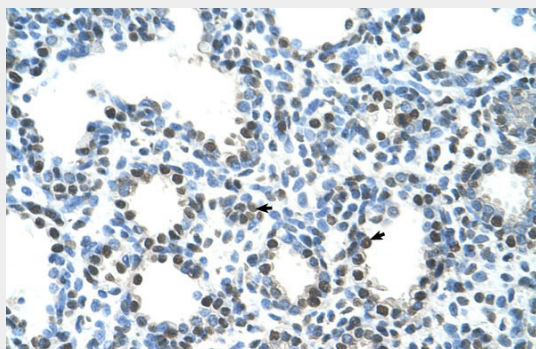
Tissue Location

Seminal vesicle.

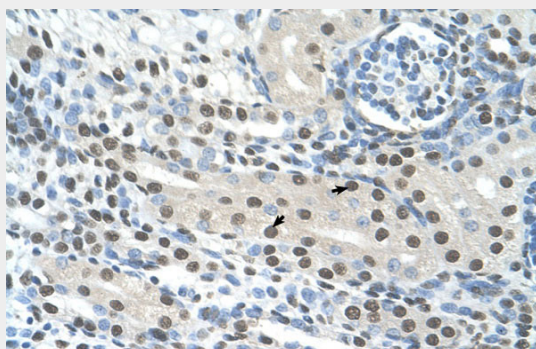
SEMG1 antibody - N-terminal region - Protocols

Provided below are standard protocols that you may find useful for product applications.

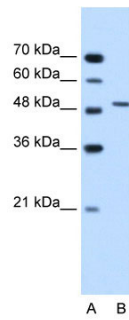
- [Western Blot](#)
- [Blocking Peptides](#)
- [Dot Blot](#)
- [Immunohistochemistry](#)
- [Immunofluorescence](#)
- [Immunoprecipitation](#)
- [Flow Cytometry](#)
- [Cell Culture](#)

SEMG1 antibody - N-terminal region - Images

Rabbit Anti-SEMG1 Antibody
Paraffin Embedded Tissue: Human Lung
Cellular Data: Alveolar cells
Antibody Concentration: 4.0-8.0 $\mu\text{g/ml}$
Magnification: 400X



Rabbit Anti-SEMG1 Antibody
Paraffin Embedded Tissue: Human Kidney
Cellular Data: Epithelial cells of renal tubule
Antibody Concentration: 4.0-8.0 $\mu\text{g/ml}$
Magnification: 400X



WB Suggested Anti-SEMG1 Antibody Titration: 1.25 μ g/ml
Positive Control: Jurkat cell lysate

SEMG1 antibody - N-terminal region - References

Hienonen, T., (2005) Cancer Res. 65 (11), 4607-4613 Reconstitution and Storage: For short term use, store at 2-8C up to 1 week. For long term storage, store at -20C in small aliquots to prevent freeze-thaw cycles.