

S100A3 antibody - N-terminal region
Rabbit Polyclonal Antibody
Catalog # AI11974

Specification

S100A3 antibody - N-terminal region - Product Information

Application	IHC, WB
Primary Accession	P33764
Other Accession	NM_002960 , NP_002951
Reactivity	Human, Mouse, Rat, Rabbit, Pig, Horse, Bovine, Dog
Predicted Host	Mouse, Bovine, Dog
Clonality	Rabbit
Calculated MW	Polyclonal 11kDa KDa

S100A3 antibody - N-terminal region - Additional Information

Gene ID 6274

Alias Symbol S100E
Other Names
Protein S100-A3, Protein S-100E, S100 calcium-binding protein A3, S100A3, S100E

Format

Liquid. Purified antibody supplied in 1x PBS buffer with 0.09% (w/v) sodium azide and 2% sucrose.

Reconstitution & Storage

Add 100 ul of distilled water. Final anti-S100A3 antibody concentration is 1 mg/ml in PBS buffer with 2% sucrose. For longer periods of storage, store at 20°C. Avoid repeat freeze-thaw cycles.

Precautions

S100A3 antibody - N-terminal region is for research use only and not for use in diagnostic or therapeutic procedures.

S100A3 antibody - N-terminal region - Protein Information

Name S100A3

Synonyms S100E

Function

Binds both calcium and zinc. May be involved in calcium- dependent cuticle cell differentiation, hair shaft and hair cuticular barrier formation.

Cellular Location

Cytoplasm.

Tissue Location

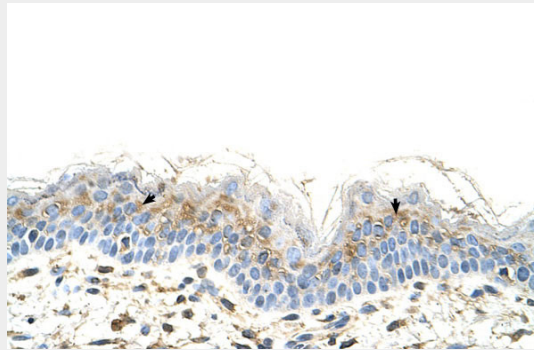
Skin specific, specifically expressed at the inner endocuticle of hair fibers.

S100A3 antibody - N-terminal region - Protocols

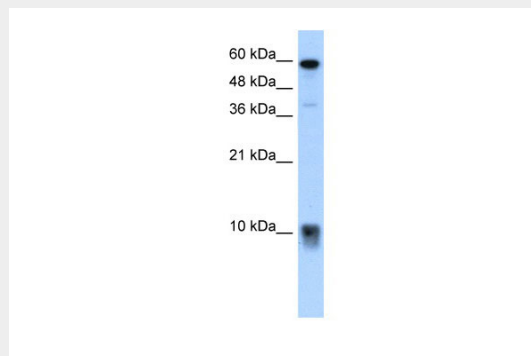
Provided below are standard protocols that you may find useful for product applications.

- [Western Blot](#)
- [Blocking Peptides](#)
- [Dot Blot](#)
- [Immunohistochemistry](#)
- [Immunofluorescence](#)
- [Immunoprecipitation](#)
- [Flow Cytometry](#)
- [Cell Culture](#)

S100A3 antibody - N-terminal region - Images



Rabbit Anti-S100A3 Antibody
Paraffin Embedded Tissue: Human Skin
Cellular Data: Squamous epithelial cells
Antibody Concentration: 4.0-8.0 $\mu\text{g/ml}$
Magnification: 400X



WB Suggested Anti-S100A3 Antibody Titration: 5.0 $\mu\text{g/ml}$
Positive Control: OVCAR-3 cell lysate
S100A3 is supported by BioGPS gene expression data to be expressed in OVCAR3

S100A3 antibody - N-terminal region - References

Kizawa, K., (2002) Biochem. Biophys. Res. Commun. 299 (5), 857-862 Reconstitution and

Storage: For short term use, store at 2-8C up to 1 week. For long term storage, store at -20C in small aliquots to prevent freeze-thaw cycles.