

PLIN antibody - N-terminal region
Rabbit Polyclonal Antibody
Catalog # AI11970

Specification

PLIN antibody - N-terminal region - Product Information

Application	WB
Primary Accession	O60240
Other Accession	NM_002666 , NP_002657
Reactivity	Human, Mouse, Rat, Zebrafish, Pig, Sheep, Horse, Bovine, Dog
Predicted	Human, Mouse, Rat, Zebrafish, Pig, Chicken, Sheep, Bovine
Host	Rabbit
Clonality	Polyclonal
Calculated MW	57kDa KDa

PLIN antibody - N-terminal region - Additional Information

Gene ID 5346

Alias Symbol **PERI, PLIN, FPLD4**
Other Names
Perilipin-1, Lipid droplet-associated protein, PLIN1, PERI, PLIN

Format

Liquid. Purified antibody supplied in 1x PBS buffer with 0.09% (w/v) sodium azide and 2% sucrose.

Reconstitution & Storage

Add 100 ul of distilled water. Final anti-PLIN antibody concentration is 1 mg/ml in PBS buffer with 2% sucrose. For longer periods of storage, store at 20°C. Avoid repeat freeze-thaw cycles.

Precautions

PLIN antibody - N-terminal region is for research use only and not for use in diagnostic or therapeutic procedures.

PLIN antibody - N-terminal region - Protein Information

Name PLIN1

Synonyms PERI, PLIN

Function

Modulator of adipocyte lipid metabolism. Coats lipid storage droplets to protect them from breakdown by hormone-sensitive lipase (HSL). Its absence may result in leanness. Plays a role in unilocular lipid droplet formation by activating CIDEC. Their interaction promotes lipid droplet enlargement and directional net neutral lipid transfer. May modulate lipolysis and triglyceride levels.

Cellular Location

Endoplasmic reticulum. Lipid droplet. Note=Lipid droplet surface-associated.

Tissue Location

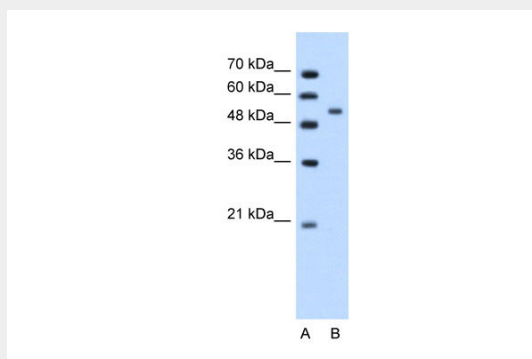
Detected in adipocytes from white adipose tissue (at protein level) (PubMed:27832861). Detected in visceral adipose tissue and mammary gland (PubMed:9521880)

PLIN antibody - N-terminal region - Protocols

Provided below are standard protocols that you may find useful for product applications.

- [Western Blot](#)
- [Blocking Peptides](#)
- [Dot Blot](#)
- [Immunohistochemistry](#)
- [Immunofluorescence](#)
- [Immunoprecipitation](#)
- [Flow Cytometry](#)
- [Cell Culture](#)

PLIN antibody - N-terminal region - Images



WB Suggested Anti-PLIN Antibody Titration: 1.25µg/ml
Positive Control: Jurkat cell lysate

PLIN antibody - N-terminal region - References

Moore,H.P., (2005) J. Biol. Chem. 280 (52), 43109-43120 Reconstitution and Storage:For short term use, store at 2-8C up to 1 week. For long term storage, store at -20C in small aliquots to prevent freeze-thaw cycles.