

NPY Antibody - middle region
Rabbit Polyclonal Antibody
Catalog # AI11945**Specification**

NPY Antibody - middle region - Product Information

Application	WB
Primary Accession	P01303
Other Accession	NM_000905 , NP_000896
Reactivity	Human, Mouse, Rat, Rabbit, Zebrafish, Pig, Sheep, Horse, Bovine, Dog
Predicted	Human, Mouse, Rat, Rabbit, Zebrafish, Pig, Sheep, Bovine
Host	Rabbit
Clonality	Polyclonal
Calculated MW	10kDa KDa

NPY Antibody - middle region - Additional Information**Gene ID** 4852

Alias Symbol	PYY4
--------------	-------------

Other Names
Pro-neuropeptide Y, Neuropeptide Y, Neuropeptide tyrosine, NPY, C-flanking peptide of NPY, CPON, NPY

Format

Liquid. Purified antibody supplied in 1x PBS buffer with 0.09% (w/v) sodium azide and 2% sucrose.

Reconstitution & StorageAdd 50 μ l of distilled water. Final Anti-NPY antibody concentration is 1 mg/ml in PBS buffer with 2% sucrose. For longer periods of storage, store at -20°C. Avoid repeat freeze-thaw cycles.**Precautions**

NPY Antibody - middle region is for research use only and not for use in diagnostic or therapeutic procedures.

NPY Antibody - middle region - Protein Information**Name** NPY**Function**

NPY is implicated in the control of feeding and in secretion of gonadotrophin-release hormone.

Cellular LocationSecreted. Cytoplasmic vesicle, secretory vesicle, neuronal dense core vesicle
{ECO:0000250|UniProtKB:P07808}

Tissue Location

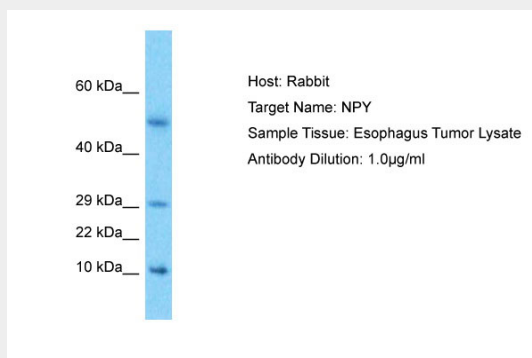
One of the most abundant peptides in the nervous system. Also found in some chromaffin cells of the adrenal medulla

NPY Antibody - middle region - Protocols

Provided below are standard protocols that you may find useful for product applications.

- [Western Blot](#)
- [Blocking Peptides](#)
- [Dot Blot](#)
- [Immunohistochemistry](#)
- [Immunofluorescence](#)
- [Immunoprecipitation](#)
- [Flow Cytometry](#)
- [Cell Culture](#)

NPY Antibody - middle region - Images



Host: Rabbit
Target Name: NPY
Sample Tissue: Esophagus Tumor lysates
Antibody Dilution: 1.0µg/ml