

EPX antibody - middle region
Rabbit Polyclonal Antibody
Catalog # AI11935**Specification**

EPX antibody - middle region - Product Information

Application	WB
Primary Accession	P11678
Other Accession	NM_000502 , NP_000493
Reactivity	Human, Mouse, Rat, Rabbit, Pig, Horse
Predicted	Mouse, Rat, Rabbit, Pig, Horse, Dog
Host	Rabbit
Clonality	Polyclonal
Calculated MW	53kDa KDa

EPX antibody - middle region - Additional Information**Gene ID** 8288**Alias Symbol** **EPO, EPP, EPX-PEN****Other Names**

Eosinophil peroxidase, EPO, 1.11.1.7, Eosinophil peroxidase light chain, Eosinophil peroxidase heavy chain, EPX, EPER, EPO, EPP

Format

Liquid. Purified antibody supplied in 1x PBS buffer with 0.09% (w/v) sodium azide and 2% sucrose.

Reconstitution & Storage

Add 50 ul of distilled water. Final anti-EPX antibody concentration is 1 mg/ml in PBS buffer with 2% sucrose. For longer periods of storage, store at 20°C. Avoid repeat freeze-thaw cycles.

Precautions

EPX antibody - middle region is for research use only and not for use in diagnostic or therapeutic procedures.

EPX antibody - middle region - Protein Information**Name** EPX**Synonyms** EPER, EPO, EPP**Function**

Mediates tyrosine nitration of secondary granule proteins in mature resting eosinophils. Shows significant inhibitory activity towards Mycobacterium tuberculosis H37Rv by inducing bacterial fragmentation and lysis.

Cellular Location

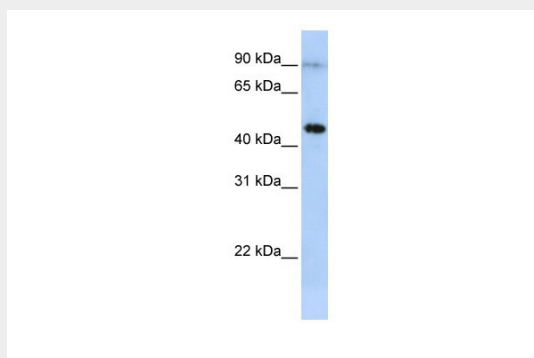
Cytoplasmic granule. Note=Cytoplasmic granules of eosinophils

EPX antibody - middle region - Protocols

Provided below are standard protocols that you may find useful for product applications.

- [Western Blot](#)
- [Blocking Peptides](#)
- [Dot Blot](#)
- [Immunohistochemistry](#)
- [Immunofluorescence](#)
- [Immunoprecipitation](#)
- [Flow Cytometry](#)
- [Cell Culture](#)

EPX antibody - middle region - Images



WB Suggested Anti-EPX Antibody Titration: 0.2-1 μ g/ml

ELISA Titer: 1:62500

Positive Control: MCF7 cell lysate