

LAMB3 antibody - middle region
Rabbit Polyclonal Antibody
Catalog # AI11928**Specification**

LAMB3 antibody - middle region - Product Information

| | |
|-------------------|---|
| Application | WB |
| Primary Accession | Q13751 |
| Other Accession | NM_000228 , NP_000219 |
| Reactivity | Human, Rabbit, Bovine, Dog |
| Predicted | Human |
| Host | Rabbit |
| Clonality | Polyclonal |
| Calculated MW | 128kDa KDa |

LAMB3 antibody - middle region - Additional Information**Gene ID** 3914**Alias Symbol** LAMNB1, LAM5, BM600-125KDA**Other Names**

Laminin subunit beta-3, Epiligrin subunit bata, Kalinin B1 chain, Kalinin subunit beta, Laminin B1k chain, Laminin-5 subunit beta, Nicein subunit beta, LAMB3, LAMNB1

Format

Liquid. Purified antibody supplied in 1x PBS buffer with 0.09% (w/v) sodium azide and 2% sucrose.

Reconstitution & Storage

Add 50 ul of distilled water. Final anti-LAMB3 antibody concentration is 1 mg/ml in PBS buffer with 2% sucrose. For longer periods of storage, store at 20°C. Avoid repeat freeze-thaw cycles.

Precautions

LAMB3 antibody - middle region is for research use only and not for use in diagnostic or therapeutic procedures.

LAMB3 antibody - middle region - Protein Information**Name** LAMB3**Synonyms** LAMNB1**Function**

Binding to cells via a high affinity receptor, laminin is thought to mediate the attachment, migration and organization of cells into tissues during embryonic development by interacting with other extracellular matrix components.

Cellular Location

Secreted, extracellular space, extracellular matrix, basement membrane

Tissue Location

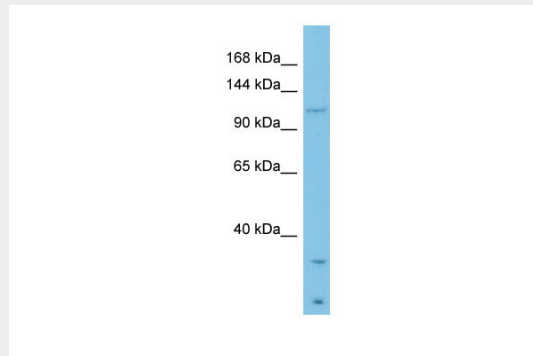
Found in the basement membranes (major component).

LAMB3 antibody - middle region - Protocols

Provided below are standard protocols that you may find useful for product applications.

- [Western Blot](#)
- [Blocking Peptides](#)
- [Dot Blot](#)
- [Immunohistochemistry](#)
- [Immunofluorescence](#)
- [Immunoprecipitation](#)
- [Flow Cytometry](#)
- [Cell Culture](#)

LAMB3 antibody - middle region - Images



WB Suggested Anti-LAMB3 Antibody Titration: 0.2-1 $\mu\text{g/ml}$

ELISA Titer: 1:62500

Positive Control: COLO205 cell lysate