

**PRPS2 antibody - middle region**  
**Rabbit Polyclonal Antibody**  
**Catalog # AI11903**

**Specification**

---

**PRPS2 antibody - middle region - Product Information**

Application	WB
Primary Accession	<a href="#">P11908</a>
Other Accession	<a href="#">NM_002765</a> , <a href="#">NP_002756</a>
Reactivity	Human, Mouse, Rat, Rabbit, Zebrafish, Pig, Horse, Bovine, Dog
Predicted Host	Mouse, Rat, Pig, Chicken
Clonality	Rabbit
Calculated MW	Polyclonal 35kDa KDa

**PRPS2 antibody - middle region - Additional Information**

**Gene ID** 5634

**Alias Symbol** PRS II, PRSII  
**Other Names**  
Ribose-phosphate pyrophosphokinase 2, 2.7.6.1, PPRibP, Phosphoribosyl pyrophosphate synthase II, PRS-II, PRPS2

**Format**

Liquid. Purified antibody supplied in 1x PBS buffer with 0.09% (w/v) sodium azide and 2% sucrose.

**Reconstitution & Storage**

Add 100 ul of distilled water. Final anti-PRPS2 antibody concentration is 1 mg/ml in PBS buffer with 2% sucrose. For longer periods of storage, store at 20°C. Avoid repeat freeze-thaw cycles.

**Precautions**

PRPS2 antibody - middle region is for research use only and not for use in diagnostic or therapeutic procedures.

**PRPS2 antibody - middle region - Protein Information**

**Name** PRPS2

**Function**

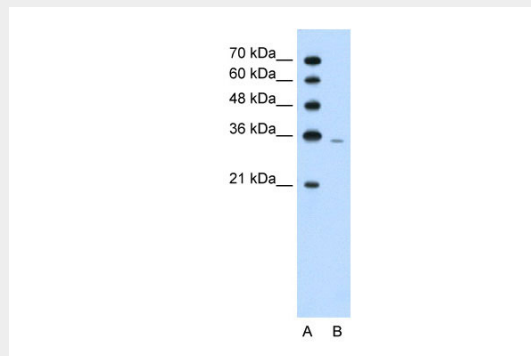
Catalyzes the synthesis of phosphoribosylpyrophosphate (PRPP) that is essential for nucleotide synthesis.

**PRPS2 antibody - middle region - Protocols**

Provided below are standard protocols that you may find useful for product applications.

- [Western Blot](#)
- [Blocking Peptides](#)
- [Dot Blot](#)
- [Immunohistochemistry](#)
- [Immunofluorescence](#)
- [Immunoprecipitation](#)
- [Flow Cytometry](#)
- [Cell Culture](#)

#### **PRPS2 antibody - middle region - Images**



WB Suggested Anti-PRPS2 Antibody Titration: 1.25µg/ml

Positive Control: Jurkat cell lysate

PRPS2 is supported by BioGPS gene expression data to be expressed in Jurkat