

**DDC antibody - N-terminal region**  
**Rabbit Polyclonal Antibody**  
**Catalog # AI11891****Specification**

---

**DDC antibody - N-terminal region - Product Information**

Application	IHC, WB
Primary Accession	<a href="#">P20711</a>
Other Accession	<a href="#">NM_000790</a> , <a href="#">NP_000781</a>
Reactivity	Human, Mouse, Rat, Rabbit, Zebrafish, Bovine, Horse, Dog
Predicted	Human, Mouse, Rat, Rabbit, Zebrafish, Pig, Chicken, Bovine
Host	Rabbit
Clonality	Polyclonal
Calculated MW	53kDa KDa

**DDC antibody - N-terminal region - Additional Information****Gene ID** 1644**Alias Symbol** AADC**Other Names**

Aromatic-L-amino-acid decarboxylase, AADC, 4.1.1.28, DOPA decarboxylase, DDC, DDC, AADC

**Format**

Liquid. Purified antibody supplied in 1x PBS buffer with 0.09% (w/v) sodium azide and 2% sucrose.

**Reconstitution & Storage**

Add 100 ul of distilled water. Final anti-DDC antibody concentration is 1 mg/ml in PBS buffer with 2% sucrose. For longer periods of storage, store at 20°C. Avoid repeat freeze-thaw cycles.

**Precautions**

DDC antibody - N-terminal region is for research use only and not for use in diagnostic or therapeutic procedures.

**DDC antibody - N-terminal region - Protein Information****Name** DDC {ECO:0000303|PubMed:15532536, ECO:0000312|HGNC:HGNC:2719}**Function**

Catalyzes the decarboxylation of L-3,4-dihydroxyphenylalanine (DOPA) to dopamine and L-5-hydroxytryptophan to serotonin.

**Tissue Location**

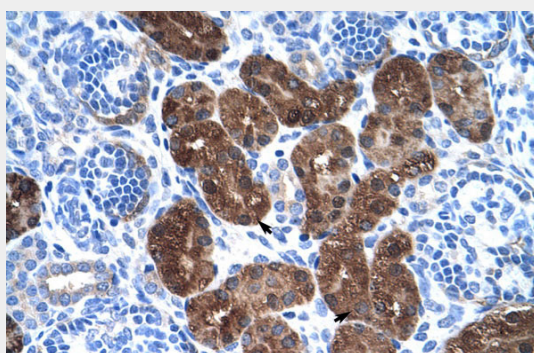
[Isoform 2]: High expression in kidney.

## DDC antibody - N-terminal region - Protocols

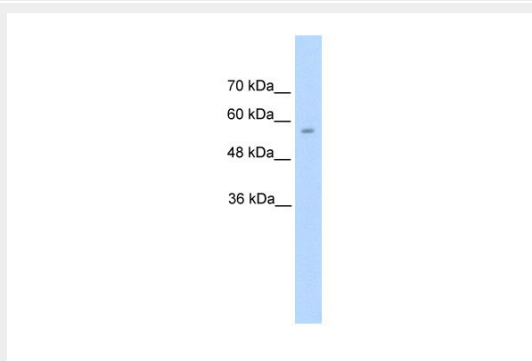
Provided below are standard protocols that you may find useful for product applications.

- [Western Blot](#)
- [Blocking Peptides](#)
- [Dot Blot](#)
- [Immunohistochemistry](#)
- [Immunofluorescence](#)
- [Immunoprecipitation](#)
- [Flow Cytometry](#)
- [Cell Culture](#)

## DDC antibody - N-terminal region - Images



Rabbit Anti-DDC Antibody  
Paraffin Embedded Tissue: Human Kidney  
Cellular Data: Epithelial cells of renal tubule  
Antibody Concentration: 4.0-8.0  $\mu\text{g/ml}$   
Magnification: 400X



WB Suggested Anti-DDC Antibody Titration: 5.0  $\mu\text{g/ml}$   
Positive Control: HepG2 cell lysate  
DDC is supported by BioGPS gene expression data to be expressed in HepG2

## DDC antibody - N-terminal region - References

Ma, J.Z., (2005) Hum. Mol. Genet. 14 (12), 1691-1698  
Reconstitution and Storage: For short term use, store at 2-8C up to 1 week. For long term storage, store at -20C in small aliquots to prevent freeze-thaw cycles.