

**ASS antibody - C-terminal region**  
**Rabbit Polyclonal Antibody**  
**Catalog # AI11881****Specification**

---

**ASS antibody - C-terminal region - Product Information**

Application	IHC, WB
Primary Accession	<a href="#">P00966</a>
Other Accession	<a href="#">NM_054012</a> , <a href="#">NP_446464</a>
Reactivity	Human, Mouse, Rat, Rabbit, Pig, Goat, Horse, Bovine, Dog
Predicted	Human, Mouse, Rat, Rabbit, Pig, Chicken, Bovine
Host	Rabbit
Clonality	Polyclonal
Calculated MW	45kDa KDa

**ASS antibody - C-terminal region - Additional Information****Gene ID** 445**Alias Symbol** **ASS1, CTLN1, DKFZp434P0216, ASS****Other Names**

Argininosuccinate synthase, 6.3.4.5, Citrulline--aspartate ligase, ASS1, ASS

**Format**

Liquid. Purified antibody supplied in 1x PBS buffer with 0.09% (w/v) sodium azide and 2% sucrose.

**Reconstitution & Storage**

Add 100 ul of distilled water. Final anti-ASS antibody concentration is 1 mg/ml in PBS buffer with 2% sucrose. For longer periods of storage, store at 20°C. Avoid repeat freeze-thaw cycles.

**Precautions**

ASS antibody - C-terminal region is for research use only and not for use in diagnostic or therapeutic procedures.

**ASS antibody - C-terminal region - Protein Information****Name** ASS1 ([HGNC:758](#))**Function**

One of the enzymes of the urea cycle, the metabolic pathway transforming neurotoxic ammonia produced by protein catabolism into innocuous urea in the liver of ureotelic animals. Catalyzes the formation of argininosuccinate from aspartate, citrulline and ATP and together with ASL it is responsible for the biosynthesis of arginine in most body tissues.

**Cellular Location**

Cytoplasm, cytosol

### Tissue Location

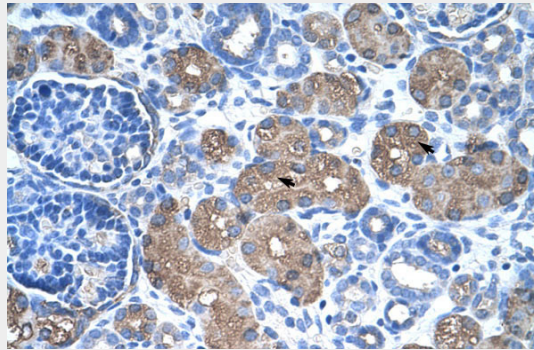
Expressed in adult liver.

### ASS antibody - C-terminal region - Protocols

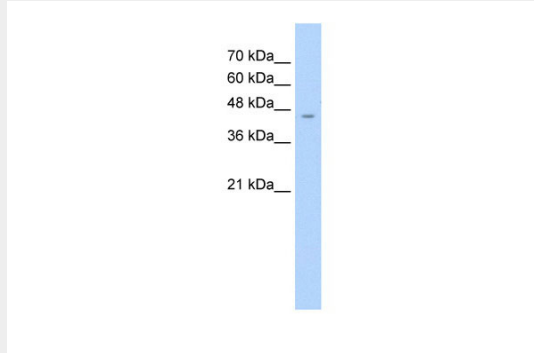
Provided below are standard protocols that you may find useful for product applications.

- [Western Blot](#)
- [Blocking Peptides](#)
- [Dot Blot](#)
- [Immunohistochemistry](#)
- [Immunofluorescence](#)
- [Immunoprecipitation](#)
- [Flow Cytometry](#)
- [Cell Culture](#)

### ASS antibody - C-terminal region - Images



Rabbit Anti-ASS Antibody  
Paraffin Embedded Tissue: Human Kidney  
Cellular Data: Epithelial cells of renal tubule  
Antibody Concentration: 4.0-8.0  $\mu\text{g/ml}$   
Magnification: 400X



70 kDa\_  
60 kDa\_  
48 kDa\_  
36 kDa\_  
21 kDa\_

WB Suggested Anti-ASS Antibody Titration: 2.5 $\mu\text{g/ml}$   
Positive Control: HepG2 cell lysate

### ASS antibody - C-terminal region - References

Hao,G., (2004) J. Biol. Chem. 279 (35), 36192-36200 Reconstitution and Storage:For short term

use, store at 2-8C up to 1 week. For long term storage, store at -20C in small aliquots to prevent freeze-thaw cycles. Publications: Hu, Z. et al. Quantitative liver-specific protein fingerprint in blood: a signature for hepatotoxicity. *Theranostics* 4, 215-28 (2014). WB, Human, Dog, Pig, H, Rabbit, Rat, Guinea pig, Mouse, Bovine, Goat 24465277