

ASS antibody - N-terminal region
Rabbit Polyclonal Antibody
Catalog # AI11880**Specification**

ASS antibody - N-terminal region - Product Information

Application	IHC, WB
Primary Accession	P00966
Other Accession	NM_054012 , NP_446464
Reactivity	Human, Mouse, Rat, Zebrafish, Pig, Goat, Horse, Yeast, Bovine, Dog
Predicted Host	Human, Mouse, Pig, Bovine
Clonality	Rabbit
Calculated MW	Polyclonal 45kDa KDa

ASS antibody - N-terminal region - Additional Information**Gene ID** 445**Alias Symbol** **ASS1, CTLN1, DKFZp434P0216, ASS**
Other Names
Argininosuccinate synthase, 6.3.4.5, Citrulline--aspartate ligase, ASS1, ASS**Format**

Liquid. Purified antibody supplied in 1x PBS buffer with 0.09% (w/v) sodium azide and 2% sucrose.

Reconstitution & Storage

Add 100 ul of distilled water. Final anti-ASS antibody concentration is 1 mg/ml in PBS buffer with 2% sucrose. For longer periods of storage, store at 20°C. Avoid repeat freeze-thaw cycles.

Precautions

ASS antibody - N-terminal region is for research use only and not for use in diagnostic or therapeutic procedures.

ASS antibody - N-terminal region - Protein Information**Name** ASS1 ([HGNC:758](#))**Function**

One of the enzymes of the urea cycle, the metabolic pathway transforming neurotoxic ammonia produced by protein catabolism into innocuous urea in the liver of ureotelic animals. Catalyzes the formation of argininosuccinate from aspartate, citrulline and ATP and together with ASL it is responsible for the biosynthesis of arginine in most body tissues.

Cellular Location

Cytoplasm, cytosol

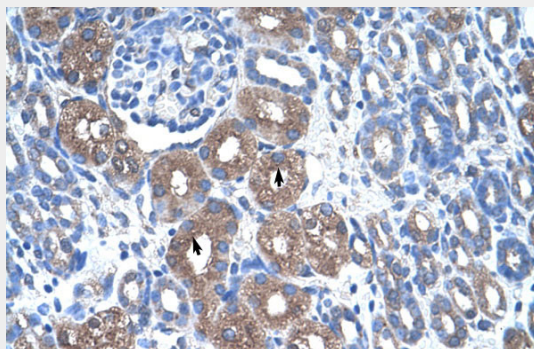
Tissue Location

Expressed in adult liver.

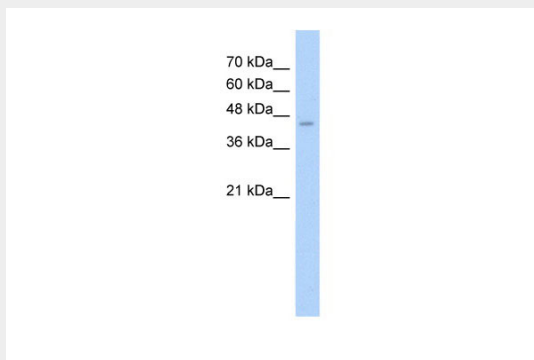
ASS antibody - N-terminal region - Protocols

Provided below are standard protocols that you may find useful for product applications.

- [Western Blot](#)
- [Blocking Peptides](#)
- [Dot Blot](#)
- [Immunohistochemistry](#)
- [Immunofluorescence](#)
- [Immunoprecipitation](#)
- [Flow Cytometry](#)
- [Cell Culture](#)

ASS antibody - N-terminal region - Images

Rabbit Anti-ASS Antibody
Paraffin Embedded Tissue: Human Kidney
Cellular Data: Epithelial cells of renal tubule
Antibody Concentration: 4.0-8.0 $\mu\text{g/ml}$
Magnification: 400X



70 kDa
60 kDa
48 kDa
36 kDa
21 kDa

WB Suggested Anti-ASS Antibody Titration: 2.5 $\mu\text{g/ml}$
Positive Control: HepG2 cell lysate

ASS antibody - N-terminal region - References

Hao,G., (2004) J. Biol. Chem. 279 (35), 36192-36200 Reconstitution and Storage:For short term

use, store at 2-8C up to 1 week. For long term storage, store at -20C in small aliquots to prevent freeze-thaw cycles.