

WNT16 antibody - C-terminal region
Rabbit Polyclonal Antibody
Catalog # AI11867**Specification**

WNT16 antibody - C-terminal region - Product Information

Application	WB
Primary Accession	O9UBV4
Other Accession	NM_057168 , NP_476509
Reactivity	Human, Mouse, Rat, Rabbit, Pig, Horse, Bovine, Dog
Predicted	Human, Mouse, Rat, Rabbit, Chicken, Bovine, Dog
Host	Rabbit
Clonality	Polyclonal
Calculated MW	38kDa KDa

WNT16 antibody - C-terminal region - Additional Information**Gene ID** 51384**Other Names**

Protein Wnt-16, WNT16

Format

Liquid. Purified antibody supplied in 1x PBS buffer with 0.09% (w/v) sodium azide and 2% sucrose.

Reconstitution & Storage

Add 100 ul of distilled water. Final anti-WNT16 antibody concentration is 1 mg/ml in PBS buffer with 2% sucrose. For longer periods of storage, store at 20°C. Avoid repeat freeze-thaw cycles.

Precautions

WNT16 antibody - C-terminal region is for research use only and not for use in diagnostic or therapeutic procedures.

WNT16 antibody - C-terminal region - Protein Information**Name** WNT16**Function**

Ligand for members of the frizzled family of seven transmembrane receptors. Probable developmental protein. May be a signaling molecule which affects the development of discrete regions of tissues. Is likely to signal over only few cell diameters (By similarity).

Cellular Location

Secreted, extracellular space, extracellular matrix

Tissue Location

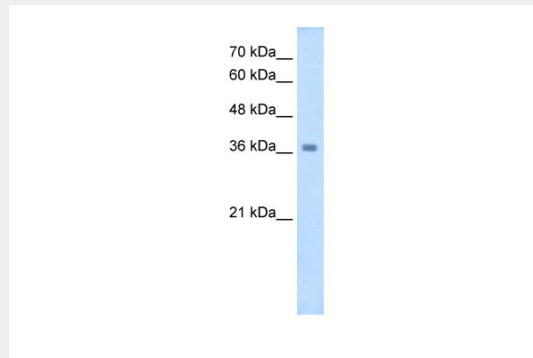
Isoform Wnt-16b is expressed in peripheral lymphoid organs such as spleen, appendix, and lymph nodes, in kidney but not in bone marrow. Isoform Wnt-16a is expressed at significant levels only in the pancreas

WNT16 antibody - C-terminal region - Protocols

Provided below are standard protocols that you may find useful for product applications.

- [Western Blot](#)
- [Blocking Peptides](#)
- [Dot Blot](#)
- [Immunohistochemistry](#)
- [Immunofluorescence](#)
- [Immunoprecipitation](#)
- [Flow Cytometry](#)
- [Cell Culture](#)

WNT16 antibody - C-terminal region - Images



WB Suggested Anti-WNT16 Antibody Titration: 2.5 μ g/ml
Positive Control: HepG2 cell lysate

WNT16 antibody - C-terminal region - References

Mazieres, J., (2005) Oncogene 24 (34), 5396-5400
Reconstitution and Storage: For short term use, store at 2-8C up to 1 week. For long term storage, store at -20C in small aliquots to prevent freeze-thaw cycles.