

**SYNJ1 antibody - middle region**  
**Rabbit Polyclonal Antibody**  
**Catalog # AI11863****Specification**

---

**SYNJ1 antibody - middle region - Product Information**

Application	<b>WB</b>
Primary Accession	<a href="#">O43426</a>
Other Accession	<a href="#">NM_003895</a> , <a href="#">NP_003886</a>
Reactivity	<b>Human, Mouse, Rat, Rabbit, Pig, Horse, Dog</b>
Predicted	<b>Human, Mouse, Rat, Rabbit, Pig, Horse, Dog</b>
Host	<b>Rabbit</b>
Clonality	<b>Polyclonal</b>
Calculated MW	<b>173kDa KDa</b>

**SYNJ1 antibody - middle region - Additional Information****Gene ID** 8867

<b>Alias Symbol</b>	<b>INPP5G</b>
<b>Other Names</b>	Synaptojanin-1, 3.1.3.36, Synaptic inositol 1, 4, 5-trisphosphate 5-phosphatase 1, SYNJ1, KIAA0910

**Format**

Liquid. Purified antibody supplied in 1x PBS buffer with 0.09% (w/v) sodium azide and 2% sucrose.

**Reconstitution & Storage**

Add 50 ul of distilled water. Final anti-SYNJ1 antibody concentration is 1 mg/ml in PBS buffer with 2% sucrose. For longer periods of storage, store at 20°C. Avoid repeat freeze-thaw cycles.

**Precautions**

SYNJ1 antibody - middle region is for research use only and not for use in diagnostic or therapeutic procedures.

**SYNJ1 antibody - middle region - Protein Information****Name** SYNJ1**Synonyms** KIAA0910**Function**

Phosphatase that acts on various phosphoinositides, including phosphatidylinositol 4-phosphate, phosphatidylinositol (4,5)- bisphosphate and phosphatidylinositol (3,4,5)-trisphosphate (PubMed:&lt;a href="http://www.uniprot.org/citations/23804563" target="\_blank"&gt;23804563&lt;/a&gt;, PubMed:&lt;a href="http://www.uniprot.org/citations/27435091" target="\_blank"&gt;27435091&lt;/a&gt;). Has a role in clathrin-mediated endocytosis (By similarity). Hydrolyzes PIP2 bound to actin

regulatory proteins resulting in the rearrangement of actin filaments downstream of tyrosine kinase and ASH/GRB2 (By similarity).

#### Cellular Location

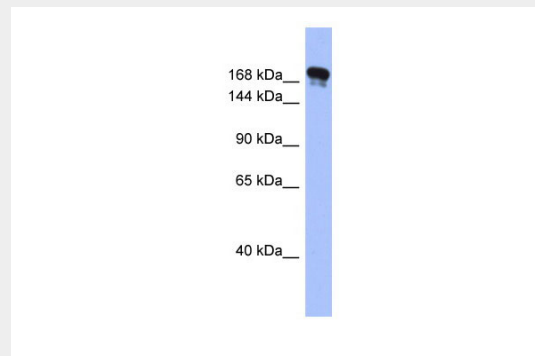
Cytoplasm, perinuclear region {ECO:0000250|UniProtKB:O18964}

### SYNJ1 antibody - middle region - Protocols

Provided below are standard protocols that you may find useful for product applications.

- [Western Blot](#)
- [Blocking Peptides](#)
- [Dot Blot](#)
- [Immunohistochemistry](#)
- [Immunofluorescence](#)
- [Immunoprecipitation](#)
- [Flow Cytometry](#)
- [Cell Culture](#)

### SYNJ1 antibody - middle region - Images



WB Suggested Anti-SYNJ1 Antibody Titration: 0.2-1  $\mu$ g/ml  
ELISA Titer: 1:312500  
Positive Control: Human Stomach

### SYNJ1 antibody - middle region - References

Thole, J.M., (2008) Plant Cell 20 (2), 381-395 Reconstitution and Storage: For short term use, store at 2-8C up to 1 week. For long term storage, store at -20C in small aliquots to prevent freeze-thaw cycles.