

**SF1 antibody - N-terminal region**  
**Rabbit Polyclonal Antibody**  
**Catalog # AI11862****Specification**

---

**SF1 antibody - N-terminal region - Product Information**

Application	IHC, WB
Primary Accession	<a href="#">Q15637</a>
Other Accession	<a href="#">NM_004630</a> , <a href="#">NP_004621</a>
Reactivity	Human, Mouse, Rat, Rabbit, Zebrafish, Pig, Horse, Bovine, Dog
Predicted	Human, Mouse, Rat, Rabbit, Zebrafish, Bovine
Host	Rabbit
Clonality	Polyclonal
Calculated MW	68kDa KDa

**SF1 antibody - N-terminal region - Additional Information****Gene ID** 7536**Alias Symbol** **BBP, MBBP, ZFM1, ZNF162, D11S636****Other Names**

Splicing factor 1, Mammalian branch point-binding protein, BBP, mBBP, Transcription factor ZFM1, Zinc finger gene in MEN1 locus, Zinc finger protein 162, SF1, ZFM1, ZNF162

**Format**

Liquid. Purified antibody supplied in 1x PBS buffer with 0.09% (w/v) sodium azide and 2% sucrose.

**Reconstitution & Storage**

Add 100 ul of distilled water. Final anti-SF1 antibody concentration is 1 mg/ml in PBS buffer with 2% sucrose. For longer periods of storage, store at 20°C. Avoid repeat freeze-thaw cycles.

**Precautions**

SF1 antibody - N-terminal region is for research use only and not for use in diagnostic or therapeutic procedures.

**SF1 antibody - N-terminal region - Protein Information****Name** SF1**Synonyms** ZFM1, ZNF162**Function**

Necessary for the ATP-dependent first step of spliceosome assembly. Binds to the intron branch point sequence (BPS) 5'-UACUAAC-3' of the pre-mRNA. May act as transcription repressor.

**Cellular Location**

Nucleus.

### Tissue Location

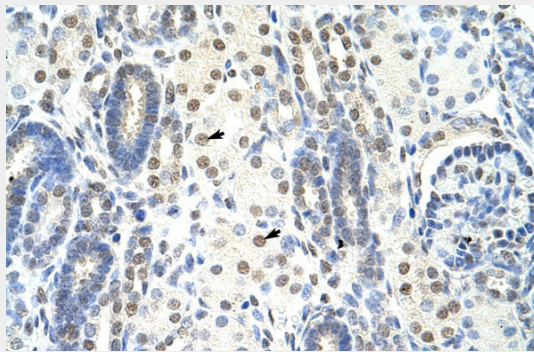
Detected in lung, ovary, adrenal gland, colon, kidney, muscle, pancreas, thyroid, placenta, brain, liver and heart

### SF1 antibody - N-terminal region - Protocols

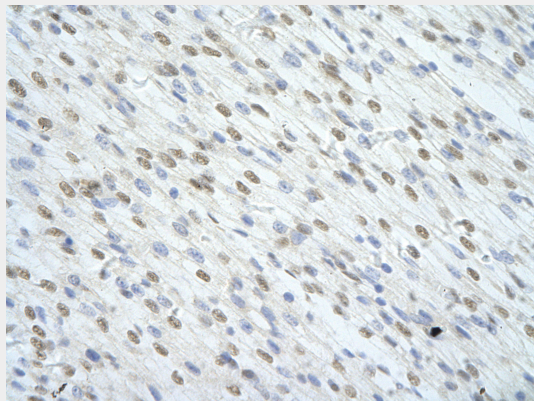
Provided below are standard protocols that you may find useful for product applications.

- [Western Blot](#)
- [Blocking Peptides](#)
- [Dot Blot](#)
- [Immunohistochemistry](#)
- [Immunofluorescence](#)
- [Immunoprecipitation](#)
- [Flow Cytometry](#)
- [Cell Culture](#)

### SF1 antibody - N-terminal region - Images

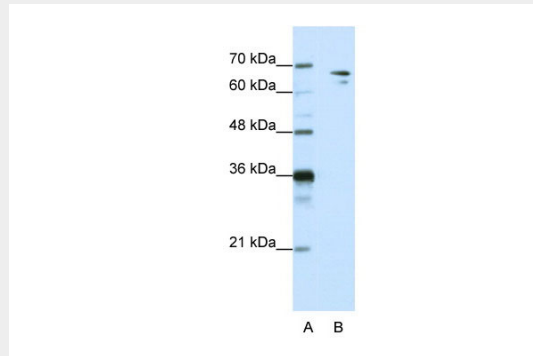


Rabbit Anti-SF1 Antibody  
Paraffin Embedded Tissue: Human Kidney  
Cellular Data: Epithelial cells of renal tubule  
Antibody Concentration: 4.0-8.0  $\mu\text{g/ml}$   
Magnification: 400X



Rabbit Anti-SF1 antibody  
Paraffin Embedded Tissue: Human Heart cell  
Cellular Data: cardiac cell of renal tubule

Antibody Concentration: 4.0-8.0 µg/ml  
Magnification: 400X



WB Suggested Anti-SF1 Antibody Titration: 1.25µg/ml

ELISA Titer: 1:312500

Positive Control: HepG2 cell lysate

SF1 is supported by BioGPS gene expression data to be expressed in HepG2

### **SF1 antibody - N-terminal region - References**

Huang, Y.H., (2006) Endocrinology 147 (5), 2481-2489  
Reconstitution and Storage: For short term use, store at 2-8C up to 1 week. For long term storage, store at -20C in small aliquots to prevent freeze-thaw cycles.