

**DDX47 antibody - C-terminal region**  
**Rabbit Polyclonal Antibody**  
**Catalog # AI11860****Specification**

---

**DDX47 antibody - C-terminal region - Product Information**

Application	IHC, WB
Primary Accession	<a href="#">O9H0S4</a>
Other Accession	<a href="#">NM_016355</a> , <a href="#">NP_057439</a>
Reactivity	Human, Mouse, Rat, Rabbit, Horse, Yeast, Bovine, Dog
Predicted	Human, Mouse, Rat, Rabbit, Horse, Bovine, Dog
Host	Rabbit
Clonality	Polyclonal
Calculated MW	50kDa KDa

**DDX47 antibody - C-terminal region - Additional Information****Gene ID** 51202**Alias Symbol** RRP3, E4-DBP, HQ0256, MSTP162**Other Names**

Probable ATP-dependent RNA helicase DDX47, 3.6.4.13, DEAD box protein 47, DDX47

**Format**

Liquid. Purified antibody supplied in 1x PBS buffer with 0.09% (w/v) sodium azide and 2% sucrose.

**Reconstitution & Storage**

Add 100 ul of distilled water. Final anti-DDX47 antibody concentration is 1 mg/ml in PBS buffer with 2% sucrose. For longer periods of storage, store at 20°C. Avoid repeat freeze-thaw cycles.

**Precautions**

DDX47 antibody - C-terminal region is for research use only and not for use in diagnostic or therapeutic procedures.

**DDX47 antibody - C-terminal region - Protein Information****Name** DDX47**Function**

Required for efficient ribosome biogenesis (By similarity). May have a role in mRNA splicing (PubMed:&lt;a href="http://www.uniprot.org/citations/16963496" target="\_blank"&gt;16963496&lt;/a&gt;). Involved in apoptosis (PubMed:&lt;a href="http://www.uniprot.org/citations/15977068" target="\_blank"&gt;15977068&lt;/a&gt;).

**Cellular Location**

Nucleus, nucleolus. Note=Localizes in the nucleolar- organizing region during ribosome biogenesis

### Tissue Location

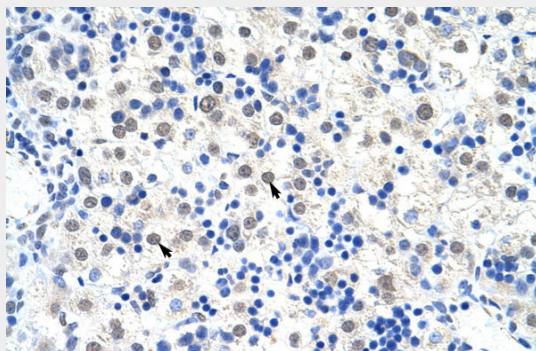
Expressed in skin, lung and breast. Also expressed in the brain.

### DDX47 antibody - C-terminal region - Protocols

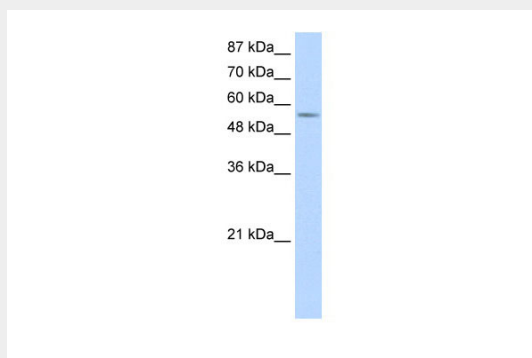
Provided below are standard protocols that you may find useful for product applications.

- [Western Blot](#)
- [Blocking Peptides](#)
- [Dot Blot](#)
- [Immunohistochemistry](#)
- [Immunofluorescence](#)
- [Immunoprecipitation](#)
- [Flow Cytometry](#)
- [Cell Culture](#)

### DDX47 antibody - C-terminal region - Images



Rabbit Anti-DDX47 Antibody  
Paraffin Embedded Tissue: Human Liver  
Cellular Data: Hepatocytes  
Antibody Concentration: 4.0-8.0  $\mu\text{g/ml}$   
Magnification: 400X



WB Suggested Anti-DDX47 Antibody Titration: 1.25 $\mu\text{g/ml}$   
Positive Control: Jurkat cell lysate

### DDX47 antibody - C-terminal region - References

Lee, J.H., (2005) *Biotechnol. Lett.* 27 (9), 623-628  
Reconstitution and Storage: For short term use,

store at 2-8C up to 1 week. For long term storage, store at -20C in small aliquots to prevent freeze-thaw cycles.