

NBEAL1 antibody - N-terminal region
Rabbit Polyclonal Antibody
Catalog # AI11859**Specification**

NBEAL1 antibody - N-terminal region - Product Information

Application	WB
Primary Accession	O6ZS30
Other Accession	NM_198945 , NP_945183
Reactivity	Human, Dog
Predicted	Human, Dog
Host	Rabbit
Clonality	Polyclonal
Calculated MW	153kDa KDa

NBEAL1 antibody - N-terminal region - Additional Information**Gene ID** 65065**Alias Symbol** **A530083I02Rik, ALS2CR17, ALS2CR16****Other Names**

Neurobeachin-like protein 1, Amyotrophic lateral sclerosis 2 chromosomal region candidate gene 16 protein, Amyotrophic lateral sclerosis 2 chromosomal region candidate gene 17 protein, NBEAL1, ALS2CR16, ALS2CR17

Format

Liquid. Purified antibody supplied in 1x PBS buffer with 0.09% (w/v) sodium azide and 2% sucrose.

Reconstitution & Storage

Add 50 ul of distilled water. Final anti-NBEAL1 antibody concentration is 1 mg/ml in PBS buffer with 2% sucrose. For longer periods of storage, store at 20°C. Avoid repeat freeze-thaw cycles.

Precautions

NBEAL1 antibody - N-terminal region is for research use only and not for use in diagnostic or therapeutic procedures.

NBEAL1 antibody - N-terminal region - Protein Information**Name** NBEAL1**Synonyms** ALS2CR16, ALS2CR17**Tissue Location**

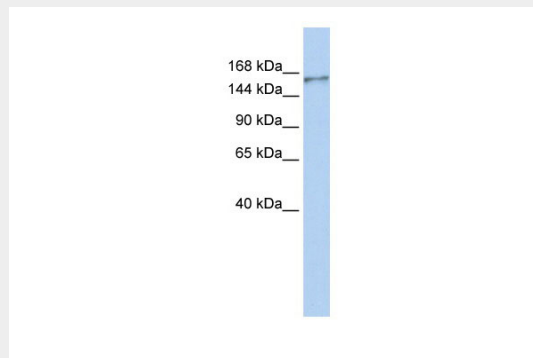
Highly expressed in brain, kidney, prostate and testis. Weakly expressed in ovary, small intestine, colon and peripheral blood leukocytes. May be correlative to several tumors, such as ovary serous adenocarcinoma and metastasis mammary gland carcinoma breast.

NBEAL1 antibody - N-terminal region - Protocols

Provided below are standard protocols that you may find useful for product applications.

- [Western Blot](#)
- [Blocking Peptides](#)
- [Dot Blot](#)
- [Immunohistochemistry](#)
- [Immunofluorescence](#)
- [Immunoprecipitation](#)
- [Flow Cytometry](#)
- [Cell Culture](#)

NBEAL1 antibody - N-terminal region - Images



WB Suggested Anti-NBEAL1 Antibody Titration: 0.2-1 μ g/ml

ELISA Titer: 1:12500

Positive Control: MCF7 cell lysate

NBEAL1 antibody - N-terminal region - References

Chen, J., Brain Res. Mol. Brain Res. 125 (1-2), 147-155 (2004) Reconstitution and Storage: For short term use, store at 2-8C up to 1 week. For long term storage, store at -20C in small aliquots to prevent freeze-thaw cycles.