

JAKMIP1 antibody - middle region
Rabbit Polyclonal Antibody
Catalog # AI11847

Specification

JAKMIP1 antibody - middle region - Product Information

Application	WB
Primary Accession	O96N16
Other Accession	XM_001129178 , XP_001129178
Reactivity	Human, Mouse, Rat, Pig, Horse, Bovine, Dog
Predicted Host	Human, Mouse, Pig, Horse, Dog
Clonality	Rabbit
Calculated MW	Polyclonal 97kDa KDa

JAKMIP1 antibody - middle region - Additional Information

Gene ID 152789

Alias Symbol **FLJ31564, Gababrbp, JAMIP1, MARLIN1**

Other Names

Janus kinase and microtubule-interacting protein 1, GABA-B receptor-binding protein, Multiple alpha-helices and RNA-linker protein 1, Marlin-1, JAKMIP1, GABABRBP, JAMIP1, MARLIN1

Format

Liquid. Purified antibody supplied in 1x PBS buffer with 0.09% (w/v) sodium azide and 2% sucrose.

Reconstitution & Storage

Add 50 ul of distilled water. Final anti-JAKMIP1 antibody concentration is 1 mg/ml in PBS buffer with 2% sucrose. For longer periods of storage, store at 20°C. Avoid repeat freeze-thaw cycles.

Precautions

JAKMIP1 antibody - middle region is for research use only and not for use in diagnostic or therapeutic procedures.

JAKMIP1 antibody - middle region - Protein Information

Name JAKMIP1

Synonyms GABABRBP, JAMIP1, MARLIN1

Function

Associates with microtubules and may play a role in the microtubule-dependent transport of the GABA-B receptor. May play a role in JAK1 signaling and regulate microtubule cytoskeleton rearrangements.

Cellular Location

Cytoplasm, cytoskeleton. Membrane; Peripheral membrane protein. Note=Colocalizes with the microtubule network Localizes to the cell body and neurites of hippocampal neurons where it accumulates in granules. Localizes to the tail and to a lower extent to the head of sperm cells

Tissue Location

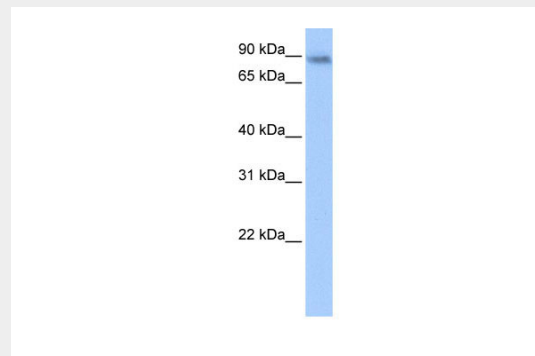
Predominantly expressed in neural tissues and lymphoid cells (at protein level). Isoform 2, isoform 3 and isoform 4 are specifically expressed in brain and retina. Isoform 1 and isoform 5 are also detected in liver, lung and skeletal muscle. Also detected in testis and to a lower extent spleen and intestine

JAKMIP1 antibody - middle region - Protocols

Provided below are standard protocols that you may find useful for product applications.

- [Western Blot](#)
- [Blocking Peptides](#)
- [Dot Blot](#)
- [Immunohistochemistry](#)
- [Immunofluorescence](#)
- [Immunoprecipitation](#)
- [Flow Cytometry](#)
- [Cell Culture](#)

JAKMIP1 antibody - middle region - Images



WB Suggested Anti-JAKMIP1 Antibody Titration: 0.2-1 μ g/ml
Positive Control: Hela cell lysate