

MSI2 antibody - N-terminal region
Rabbit Polyclonal Antibody
Catalog # AI11844**Specification**

MSI2 antibody - N-terminal region - Product Information

Application	IHC, WB
Primary Accession	O96DH6
Other Accession	NM_138962 , NP_620412
Reactivity	Human, Mouse, Rat, Rabbit, Zebrafish, Pig, Horse, Bovine, Dog
Predicted Host	Human, Mouse, Rabbit, Zebrafish, Horse
Clonality	Rabbit
Calculated MW	Polyclonal 36kDa KDa

MSI2 antibody - N-terminal region - Additional Information**Gene ID** 124540**Alias Symbol** MSI2H
Other Names
RNA-binding protein Musashi homolog 2, Musashi-2, MSI2**Format**

Liquid. Purified antibody supplied in 1x PBS buffer with 0.09% (w/v) sodium azide and 2% sucrose.

Reconstitution & Storage

Add 100 ul of distilled water. Final anti-MSI2 antibody concentration is 1 mg/ml in PBS buffer with 2% sucrose. For longer periods of storage, store at 20°C. Avoid repeat freeze-thaw cycles.

Precautions

MSI2 antibody - N-terminal region is for research use only and not for use in diagnostic or therapeutic procedures.

MSI2 antibody - N-terminal region - Protein Information**Name** MSI2**Function**

RNA binding protein that regulates the expression of target mRNAs at the translation level. May play a role in the proliferation and maintenance of stem cells in the central nervous system (By similarity).

Cellular Location

Cytoplasm. Note=Associated with polysomes.

Tissue Location

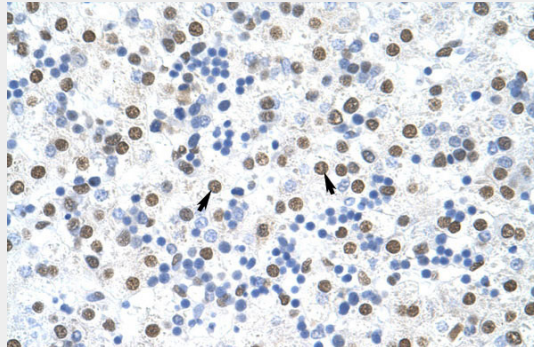
Ubiquitous; detected at low levels.

MSI2 antibody - N-terminal region - Protocols

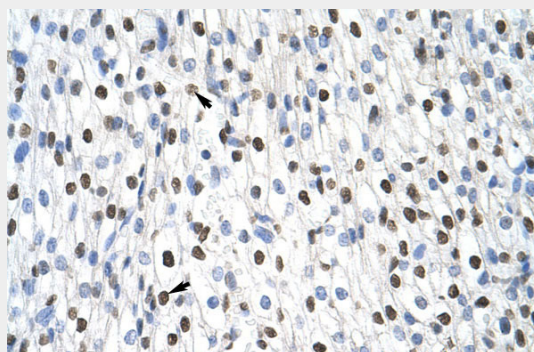
Provided below are standard protocols that you may find useful for product applications.

- [Western Blot](#)
- [Blocking Peptides](#)
- [Dot Blot](#)
- [Immunohistochemistry](#)
- [Immunofluorescence](#)
- [Immunoprecipitation](#)
- [Flow Cytometry](#)
- [Cell Culture](#)

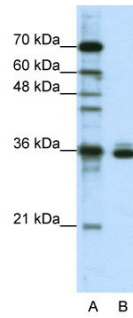
MSI2 antibody - N-terminal region - Images



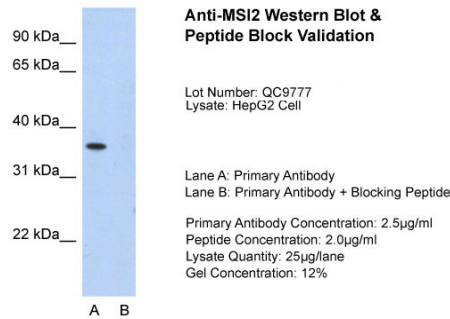
Rabbit Anti-MSI2 Antibody
Paraffin Embedded Tissue: Human Liver
Cellular Data: Hepatocytes
Antibody Concentration: 4.0-8.0 $\mu\text{g/ml}$
Magnification: 400X



Rabbit Anti-MSI2 Antibody
Paraffin Embedded Tissue: Human Heart
Cellular Data: Myocardial cells
Antibody Concentration: 4.0-8.0 $\mu\text{g/ml}$
Magnification: 400X



WB Suggested Anti-MS12 Antibody Titration: 1.25µg/ml
 ELISA Titer: 1:1562500
 Positive Control: HepG2 cell lysate



Host: Rabbit
 Target Name:MS12
 Sample Tissue:HepG2
 Lane A: Primary Antibody
 Lane B: Primary Antibody + Blocking Peptide
 Primary Antibody
 Concentration:2.5µg/ml
 Peptide Concentration: 2.0µg/ml
 Lysate Quantity: 25ug/lane
 Gel Concentration: 12%

MS12 antibody - N-terminal region - References

Barbouti,A., (2003) Cancer Res. 63 (6), 1202-1206
 Reconstitution and Storage:For short term use, store at 2-8C up to 1 week. For long term storage, store at -20C in small aliquots to prevent freeze-thaw cycles.