

WBSCR1 antibody - middle region
Rabbit Polyclonal Antibody
Catalog # AI11833**Specification**

WBSCR1 antibody - middle region - Product Information

Application	IHC, WB
Primary Accession	Q15056
Other Accession	NM_022170 , NP_071496
Reactivity	Human, Mouse, Rat, Pig, Horse, Dog
Predicted	Human, Mouse, Rat, Chicken, Dog
Host	Rabbit
Clonality	Polyclonal
Calculated MW	27kDa KDa

WBSCR1 antibody - middle region - Additional Information**Gene ID** 7458**Alias Symbol** WSCR1, WBSCR1, eIF-4H**Other Names**

Eukaryotic translation initiation factor 4H, eIF-4H, Williams-Beuren syndrome chromosomal region 1 protein, EIF4H, KIAA0038, WBSCR1, WSCR1

Format

Liquid. Purified antibody supplied in 1x PBS buffer with 0.09% (w/v) sodium azide and 2% sucrose.

Reconstitution & Storage

Add 100 ul of distilled water. Final anti-WBSCR1 antibody concentration is 1 mg/ml in PBS buffer with 2% sucrose. For longer periods of storage, store at 20°C. Avoid repeat freeze-thaw cycles.

Precautions

WBSCR1 antibody - middle region is for research use only and not for use in diagnostic or therapeutic procedures.

WBSCR1 antibody - middle region - Protein Information**Name** EIF4H**Synonyms** KIAA0038, WBSCR1, WSCR1**Function**

Stimulates the RNA helicase activity of EIF4A in the translation initiation complex. Binds weakly mRNA.

Cellular Location

Cytoplasm, perinuclear region.

Tissue Location

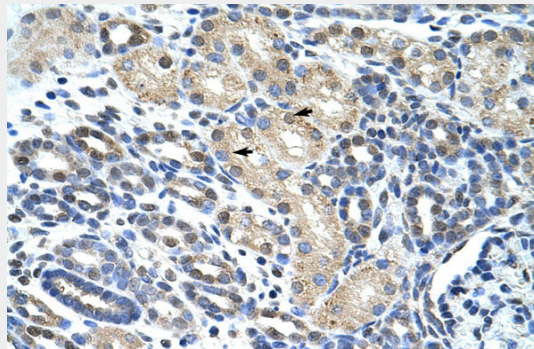
The short isoform is the predominant isoform and is expressed alone in liver and skeletal muscle. Both isoforms are expressed in fibroblast, spleen, testis and bone marrow. Levels are high in lung and pancreas and low in heart, frontal cortex and kidney

WBSCR1 antibody - middle region - Protocols

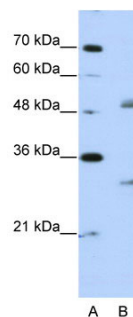
Provided below are standard protocols that you may find useful for product applications.

- [Western Blot](#)
- [Blocking Peptides](#)
- [Dot Blot](#)
- [Immunohistochemistry](#)
- [Immunofluorescence](#)
- [Immunoprecipitation](#)
- [Flow Cytometry](#)
- [Cell Culture](#)

WBSCR1 antibody - middle region - Images



Rabbit Anti-WBSCR1 Antibody
Paraffin Embedded Tissue: Human Kidney
Cellular Data: Epithelial cells of renal tubule
Antibody Concentration: 4.0-8.0 µg/ml
Magnification: 400X



WB Suggested Anti-WBSCR1 Antibody Titration: 2.5µg/ml
Positive Control: Jurkat cell lysate
EIF4H is supported by BioGPS gene expression data to be expressed in Jurkat

WBSCR1 antibody - middle region - References

Doepker, R.C., (2004) J. Virol. 78 (9), 4684-4699 Reconstitution and Storage: For short term use, store at 2-8C up to 1 week. For long term storage, store at -20C in small aliquots to prevent freeze-thaw cycles.