

**PRPF6 antibody - C-terminal region**  
**Rabbit Polyclonal Antibody**  
**Catalog # AI11789**

**Specification**

---

**PRPF6 antibody - C-terminal region - Product Information**

Application	WB
Primary Accession	<a href="#">O94906</a>
Other Accession	<a href="#">NM_012469</a> , <a href="#">NP_036601</a>
Reactivity	Human, Mouse, Rat, Rabbit, Zebrafish, Horse, Bovine, Dog
Predicted Host	Rabbit, Chicken, Horse, Dog
Clonality	Rabbit
Calculated MW	Polyclonal 104kDa KDa

**PRPF6 antibody - C-terminal region - Additional Information**

**Gene ID** 24148

**Alias Symbol** **ANT-1, TOM, ANT1, Prp6, hPrp6, U5-102K, C20orf14**

**Other Names**

Pre-mRNA-processing factor 6, Androgen receptor N-terminal domain-transactivating protein 1, ANT-1, PRP6 homolog, U5 snRNP-associated 102 kDa protein, U5-102 kDa protein, PRPF6, C20orf14

**Format**

Liquid. Purified antibody supplied in 1x PBS buffer with 0.09% (w/v) sodium azide and 2% sucrose.

**Reconstitution & Storage**

Add 100 ul of distilled water. Final anti-PRPF6 antibody concentration is 1 mg/ml in PBS buffer with 2% sucrose. For longer periods of storage, store at 20°C. Avoid repeat freeze-thaw cycles.

**Precautions**

PRPF6 antibody - C-terminal region is for research use only and not for use in diagnostic or therapeutic procedures.

**PRPF6 antibody - C-terminal region - Protein Information**

**Name** PRPF6 ([HGNC:15860](#))

**Synonyms** C20orf14

**Function**

Involved in pre-mRNA splicing as component of the U4/U6-U5 tri-snRNP complex, one of the building blocks of the spliceosome (PubMed:<a href="http://www.uniprot.org/citations/20118938" target="\_blank">20118938</a>, PubMed:<a href="http://www.uniprot.org/citations/21549338" target="\_blank">21549338</a>)

target="\_blank">21549338</a>, PubMed:<a href="http://www.uniprot.org/citations/28781166" target="\_blank">28781166</a>). Enhances dihydrotestosterone-induced transactivation activity of AR, as well as dexamethasone-induced transactivation activity of NR3C1, but does not affect estrogen-induced transactivation.

#### Cellular Location

Nucleus, nucleoplasm. Nucleus speckle. Note=Localized in splicing speckles.

#### Tissue Location

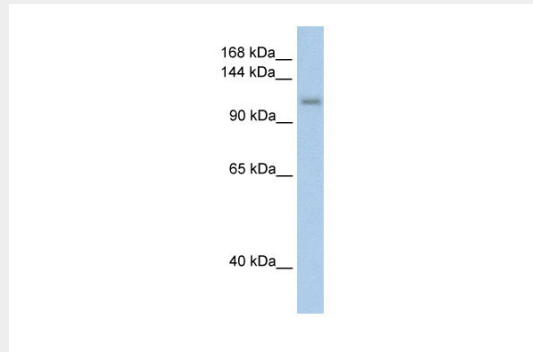
Widely expressed..

### PRPF6 antibody - C-terminal region - Protocols

Provided below are standard protocols that you may find useful for product applications.

- [Western Blot](#)
- [Blocking Peptides](#)
- [Dot Blot](#)
- [Immunohistochemistry](#)
- [Immunofluorescence](#)
- [Immunoprecipitation](#)
- [Flow Cytometry](#)
- [Cell Culture](#)

### PRPF6 antibody - C-terminal region - Images



WB Suggested Anti-PRPF6 Antibody Titration: 2.5µg/ml

ELISA Titer: 1:62500

Positive Control: Transfected 293T

### PRPF6 antibody - C-terminal region - References

Fan,S., (2006) Biochem. Biophys. Res. Commun. 341 (1), 192-201  
Reconstitution and Storage:For short term use, store at 2-8C up to 1 week. For long term storage, store at -20C in small aliquots to prevent freeze-thaw cycles.