

**LSM6 antibody - middle region**  
**Rabbit Polyclonal Antibody**  
**Catalog # AI11787****Specification**

---

**LSM6 antibody - middle region - Product Information**

Application	<b>WB</b>
Primary Accession	<a href="#">P62312</a>
Other Accession	<a href="#">NM_007080</a> , <a href="#">NP_009011</a>
Reactivity	<b>Human, Mouse, Rat, Rabbit, Zebrafish, Pig, Horse, Yeast, Bovine, Dog</b>
Predicted	<b>Human, Mouse, Rat, Zebrafish, Chicken, Bovine, Dog</b>
Host	<b>Rabbit</b>
Clonality	<b>Polyclonal</b>
Calculated MW	<b>9kDa KDa</b>

**LSM6 antibody - middle region - Additional Information****Gene ID** 11157

Alias Symbol	<b>YDR378°C</b>
<b>Other Names</b>	
U6 snRNA-associated Sm-like protein LSm6, LSM6	

**Format**

Liquid. Purified antibody supplied in 1x PBS buffer with 0.09% (w/v) sodium azide and 2% sucrose.

**Reconstitution & Storage**

Add 50 ul of distilled water. Final anti-LSM6 antibody concentration is 1 mg/ml in PBS buffer with 2% sucrose. For longer periods of storage, store at 20°C. Avoid repeat freeze-thaw cycles.

**Precautions**

LSM6 antibody - middle region is for research use only and not for use in diagnostic or therapeutic procedures.

**LSM6 antibody - middle region - Protein Information****Name** LSM6**Function**

Plays a role in pre-mRNA splicing as component of the U4/U6- U5 tri-snRNP complex that is involved in spliceosome assembly, and as component of the precatalytic spliceosome (spliceosome B complex) (PubMed:&lt;a href="http://www.uniprot.org/citations/28781166" target="\_blank"&gt;28781166&lt;/a&gt;). The heptameric LSM2-8 complex binds specifically to the 3'-terminal U-tract of U6 snRNA (PubMed:&lt;a href="http://www.uniprot.org/citations/10523320" target="\_blank"&gt;10523320&lt;/a&gt;). Component of LSm protein complexes, which are involved in RNA processing and may function in a chaperone-like manner, facilitating the efficient association

of RNA processing factors with their substrates. Component of the cytoplasmic LSM1-LSM7 complex, which is thought to be involved in mRNA degradation by activating the decapping step in the 5'-to-3' mRNA decay pathway (Probable).

#### Cellular Location

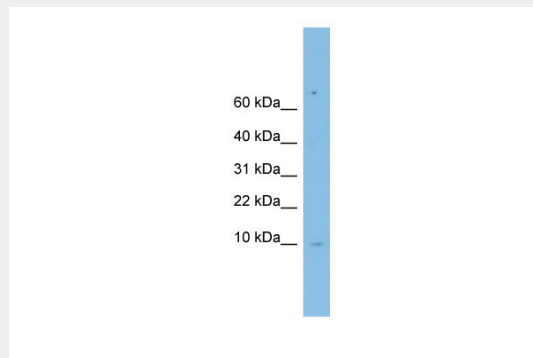
Cytoplasm. Nucleus

#### LSM6 antibody - middle region - Protocols

Provided below are standard protocols that you may find useful for product applications.

- [Western Blot](#)
- [Blocking Peptides](#)
- [Dot Blot](#)
- [Immunohistochemistry](#)
- [Immunofluorescence](#)
- [Immunoprecipitation](#)
- [Flow Cytometry](#)
- [Cell Culture](#)

#### LSM6 antibody - middle region - Images



WB Suggested Anti-LSM6 Antibody Titration: 0.2-1  $\mu$ g/ml

ELISA Titer: 1:62500

Positive Control: HCT15 cell lysate

LSM6 is supported by BioGPS gene expression data to be expressed in HCT15