

SF3A3 antibody - middle region
Rabbit Polyclonal Antibody
Catalog # AI11784**Specification**

SF3A3 antibody - middle region - Product Information

Application	WB
Primary Accession	Q12874
Other Accession	NM_006802 , NP_006793
Reactivity	Human, Mouse, Rat, Rabbit, Zebrafish, Pig, Horse, Yeast, Bovine, Dog
Predicted	Human, Mouse, Rat, Rabbit, Zebrafish, Pig, Chicken, Bovine
Host	Rabbit
Clonality	Polyclonal
Calculated MW	59kDa KDa

SF3A3 antibody - middle region - Additional Information**Gene ID** 10946**Alias Symbol** PRP9, PRPF9, SAP61, SF3a60**Other Names**

Splicing factor 3A subunit 3, SF3a60, Spliceosome-associated protein 61, SAP 61, SF3A3, SAP61

Format

Liquid. Purified antibody supplied in 1x PBS buffer with 0.09% (w/v) sodium azide and 2% sucrose.

Reconstitution & Storage

Add 50 ul of distilled water. Final anti-SF3A3 antibody concentration is 1 mg/ml in PBS buffer with 2% sucrose. For longer periods of storage, store at 20°C. Avoid repeat freeze-thaw cycles.

Precautions

SF3A3 antibody - middle region is for research use only and not for use in diagnostic or therapeutic procedures.

SF3A3 antibody - middle region - Protein Information**Name** SF3A3**Synonyms** SAP61**Function**Component of the 17S U2 SnRNP complex of the spliceosome, a large ribonucleoprotein complex that removes introns from transcribed pre-mRNAs (PubMed:[10882114](http://www.uniprot.org/citations/10882114)), PubMed:[11533230](http://www.uniprot.org/citations/11533230)), PubMed:[32494006](http://www.uniprot.org/citations/32494006)), PubMed:[32494006](http://www.uniprot.org/citations/32494006)), PubMed:[32494006](http://www.uniprot.org/citations/32494006)), PubMed:[32494006](http://www.uniprot.org/citations/32494006))

<http://www.uniprot.org/citations/34822310> target="_blank">34822310, PubMed:8022796). The 17S U2 SnRNP complex (1) directly participates in early spliceosome assembly and (2) mediates recognition of the intron branch site during pre-mRNA splicing by promoting the selection of the pre-mRNA branch-site adenosine, the nucleophile for the first step of splicing (PubMed:10882114, PubMed:11533230, PubMed:32494006, PubMed:34822310). Within the 17S U2 SnRNP complex, SF3A3 is part of the SF3A subcomplex that contributes to the assembly of the 17S U2 snRNP, and the subsequent assembly of the pre-spliceosome 'E' complex and the pre-catalytic spliceosome 'A' complex (PubMed:10882114, PubMed:11533230). Involved in pre-mRNA splicing as a component of pre-catalytic spliceosome 'B' complexes (PubMed:29360106, PubMed:30315277).

Cellular Location

Nucleus speckle. Nucleus

Tissue Location

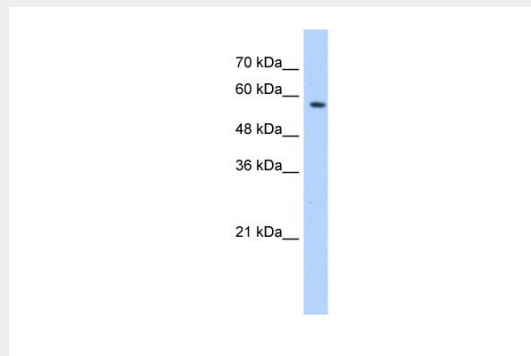
Ubiquitous..

SF3A3 antibody - middle region - Protocols

Provided below are standard protocols that you may find useful for product applications.

- [Western Blot](#)
- [Blocking Peptides](#)
- [Dot Blot](#)
- [Immunohistochemistry](#)
- [Immunofluorescence](#)
- [Immunoprecipitation](#)
- [Flow Cytometry](#)
- [Cell Culture](#)

SF3A3 antibody - middle region - Images



WB Suggested Anti-SF3A3 Antibody Titration: 0.2-1 µg/ml

ELISA Titer: 1:12500

Positive Control: 721_B cell lysate

SF3A3 is supported by BioGPS gene expression data to be expressed in 721_B

SF3A3 antibody - middle region - References

Ewing, R.M., Mol. Syst. Biol. 3, 89 (2007) Reconstitution and Storage: For short term use, store at 2-8C up to 1 week. For long term storage, store at -20C in small aliquots to prevent freeze-thaw cycles.